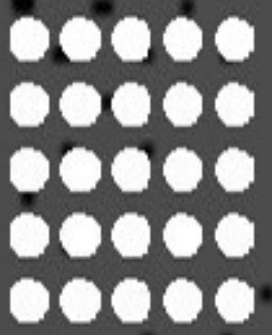


REXTRON[®]

DIGITAL WALL TILES



300mm X 450mm
Digital Wall Tiles



KITCHEN SERIES

WALL



Collection

7.5 MM
THICKNESS

Weight	10.4 kg Approx
Sq. ft	8.71 Per Box
Sq. mtr	0.81 Per Box

PRODUCT APPLICATION



Frost
Resistant



Resistant to
Thermal Shock



Stain
Resistant



Durable
Over Time



Resistant to
Deep Scratch



Suitable for
Crowded Area



Slip
Resistant



Resistant to
Acids and Chemicals



Environment
Friendly



Resistant to
Loads



Rectified



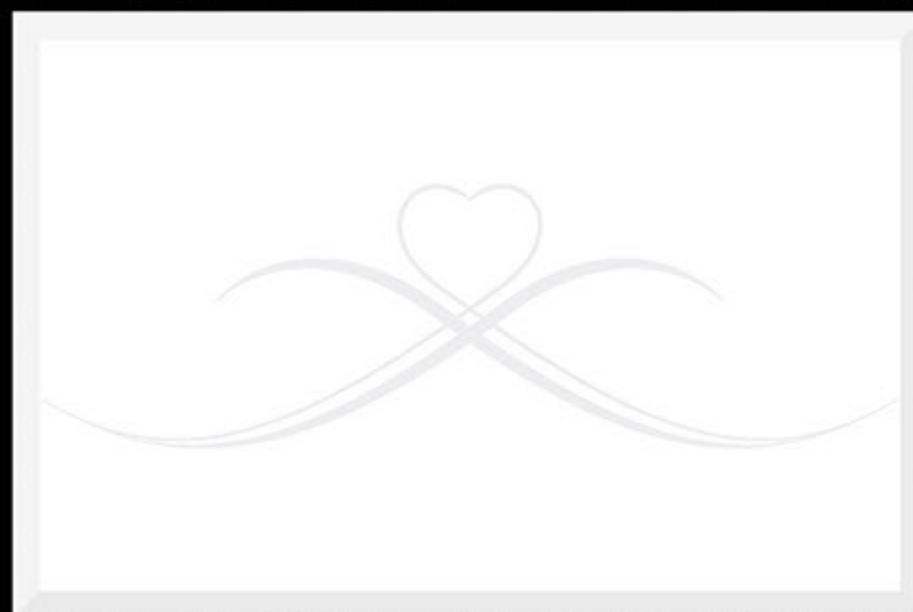
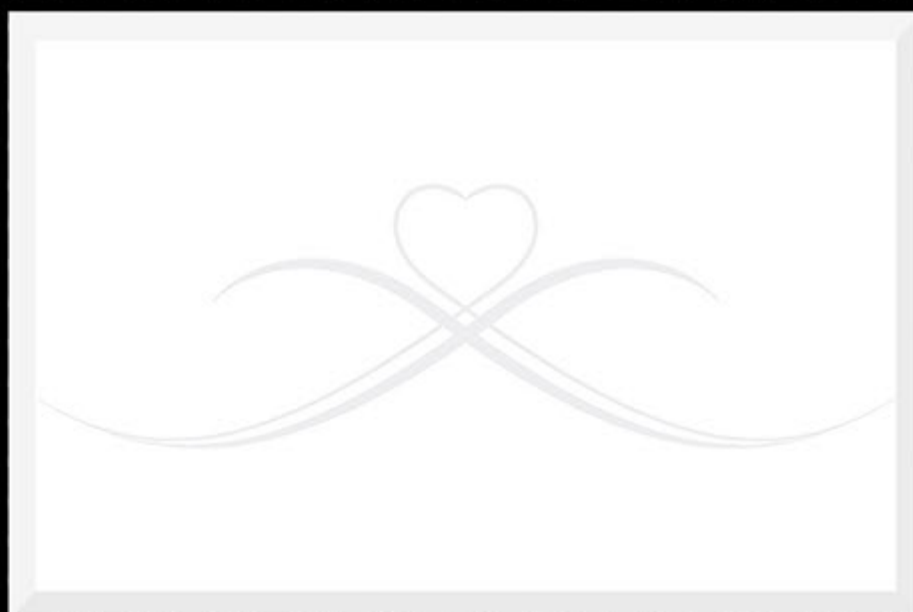
300X450MM

KITCHEN SERIES

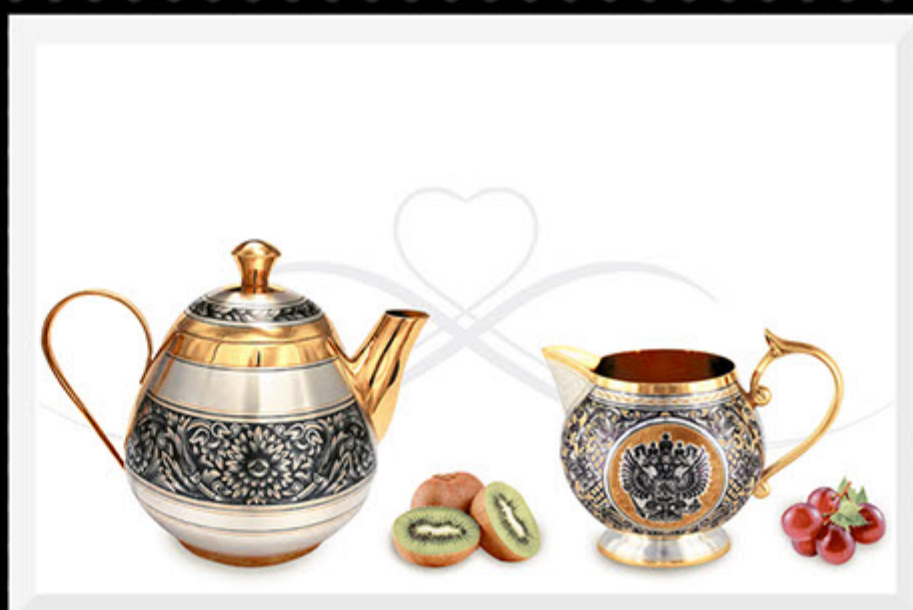
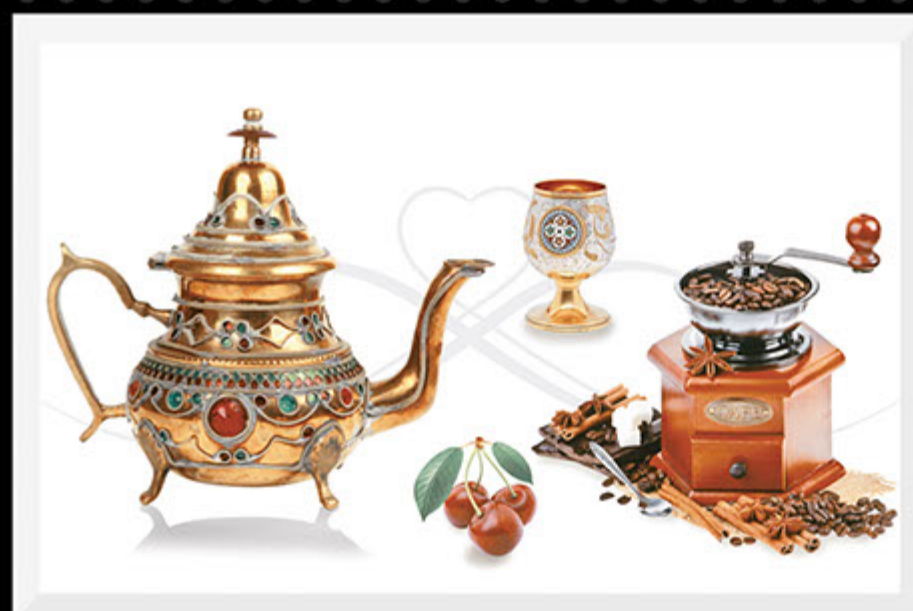
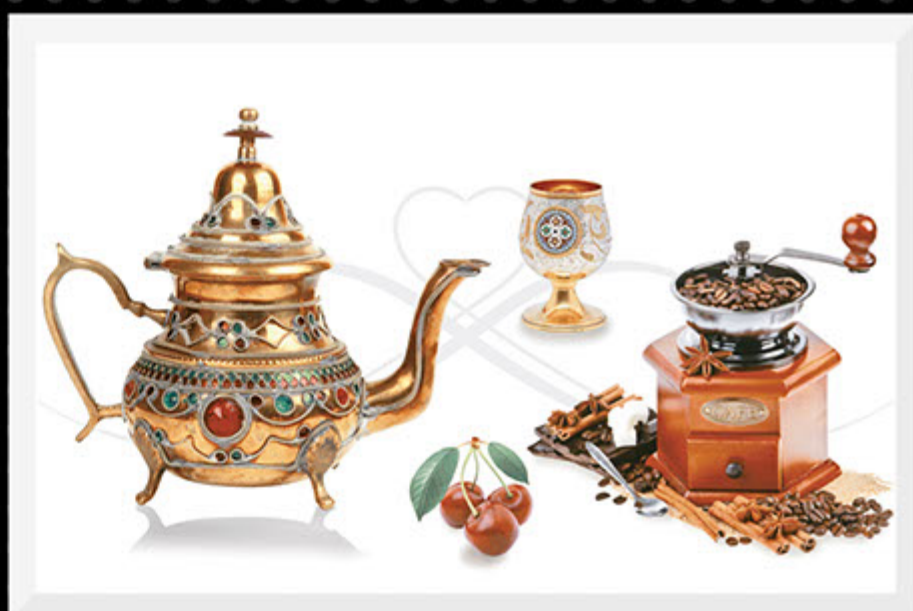
REXTRON[®]
DIGITAL WALL TILES

401

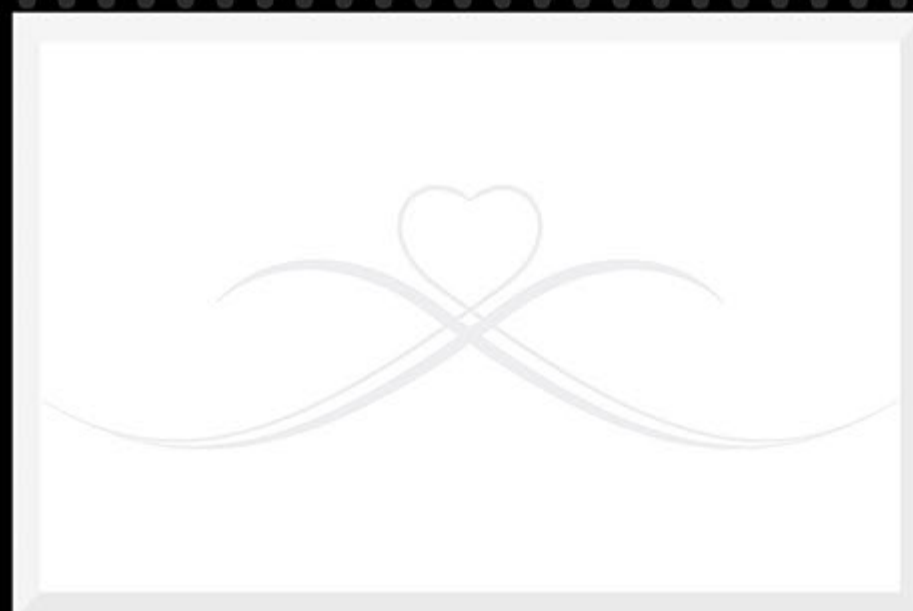
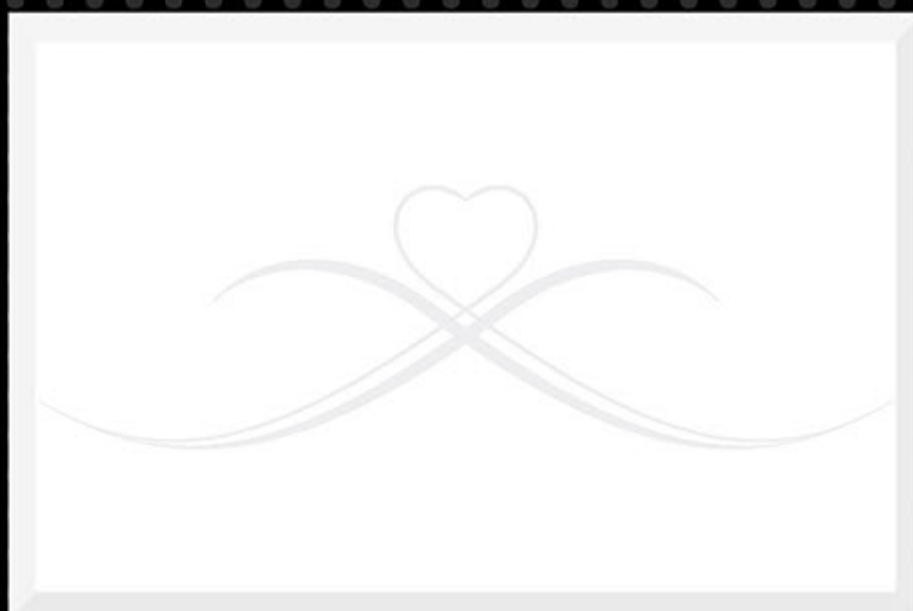
LT



HL-1
(RANDOM)



LT



NOTE : HL-1 & HL-2 RANDOM PACKING



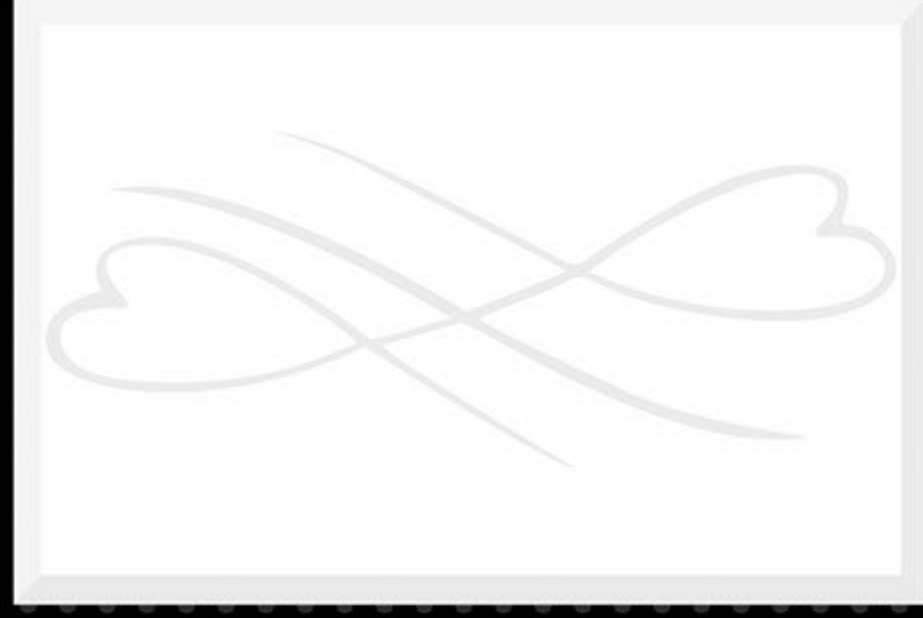
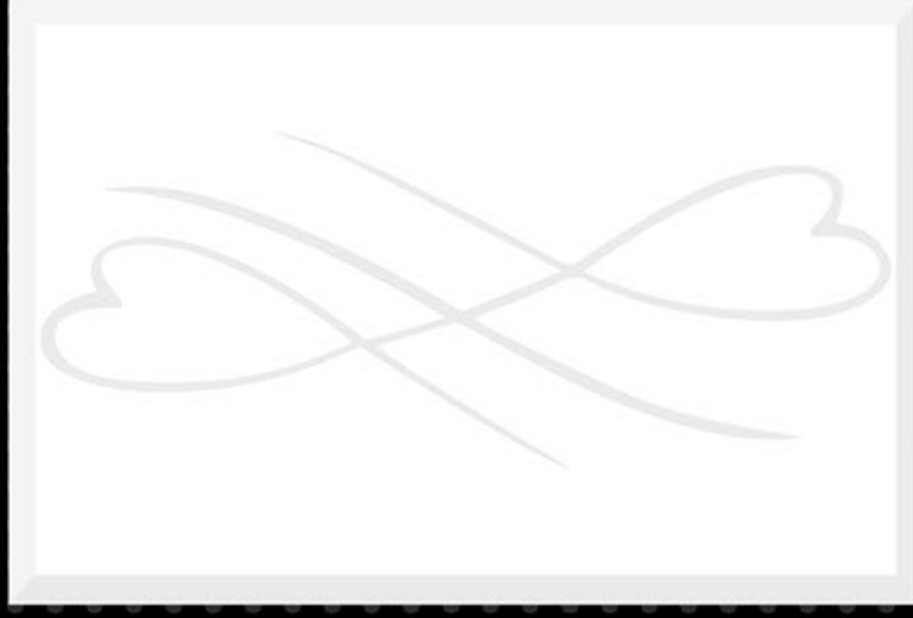
300X450MM

KITCHEN SERIES

REXTRON[®]
DIGITAL WALL TILES

402

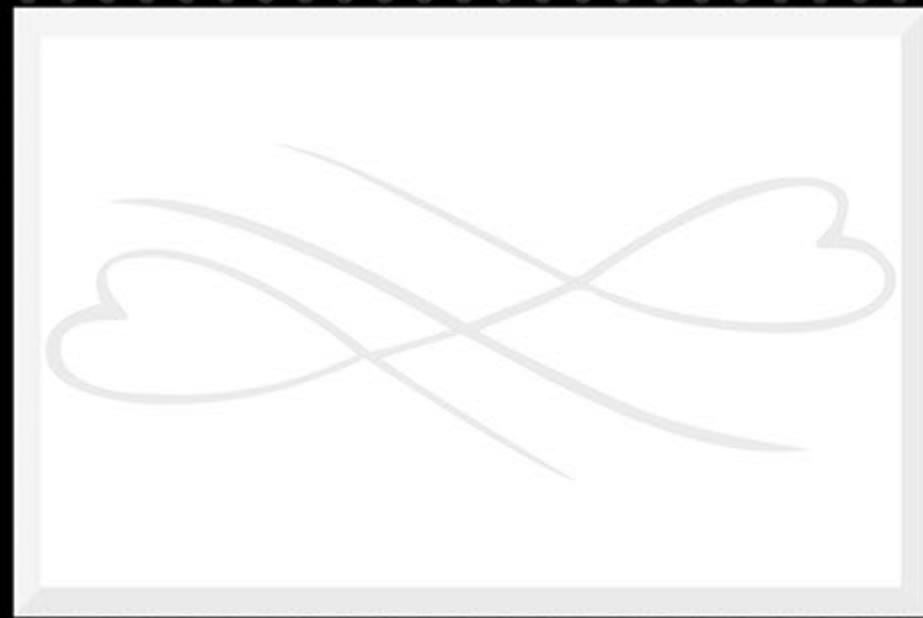
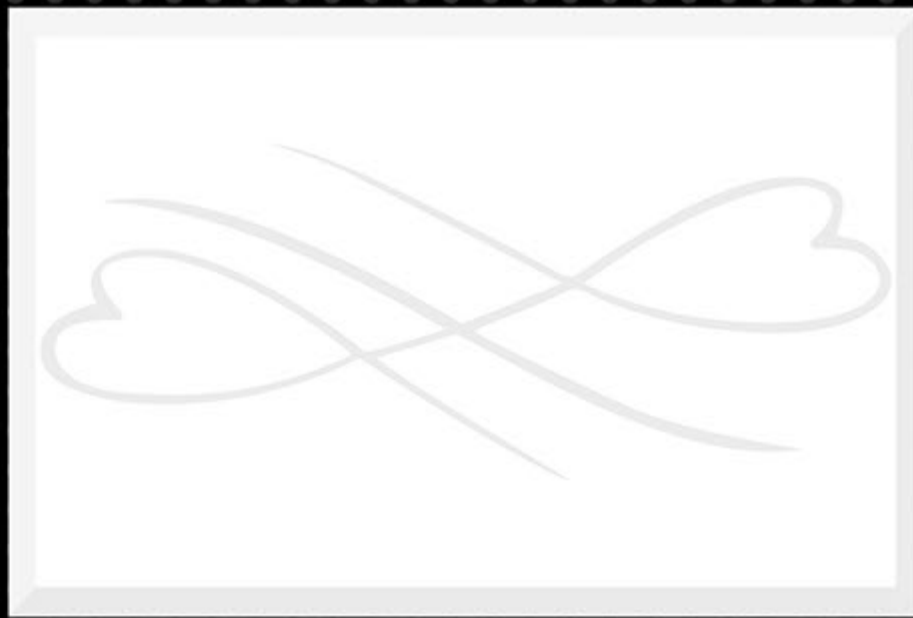
LT



HL-1
(RANDOM)



LT



NOTE : HL-1 & HL-2 RANDOM PACKING



300X450MM

KITCHEN SERIES

REXTRON[®]
DIGITAL WALL TILES

403

LT



HL-1
(RANDOM)



LT



NOTE : HL-1 & HL-2 RANDOM PACKING



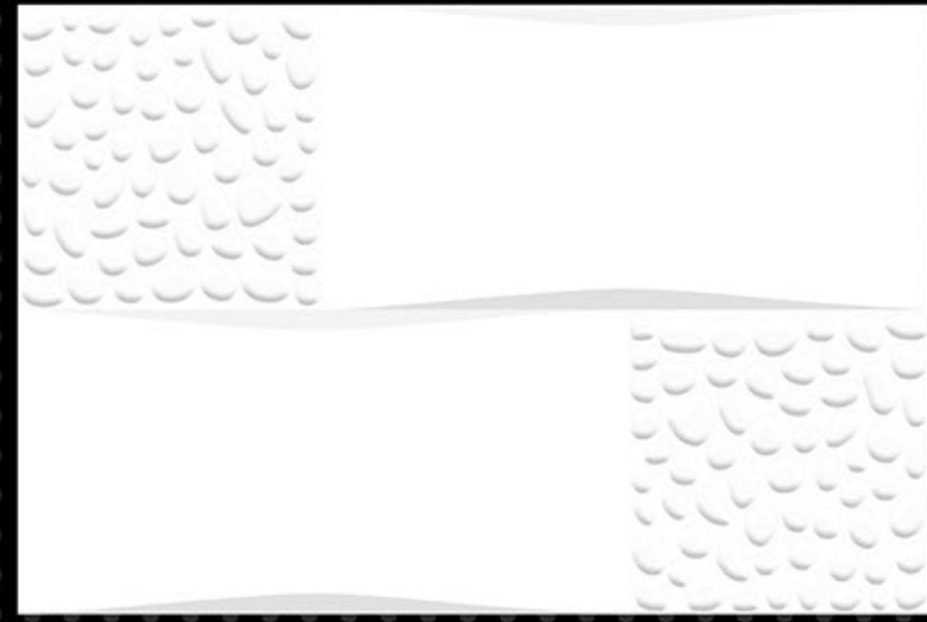
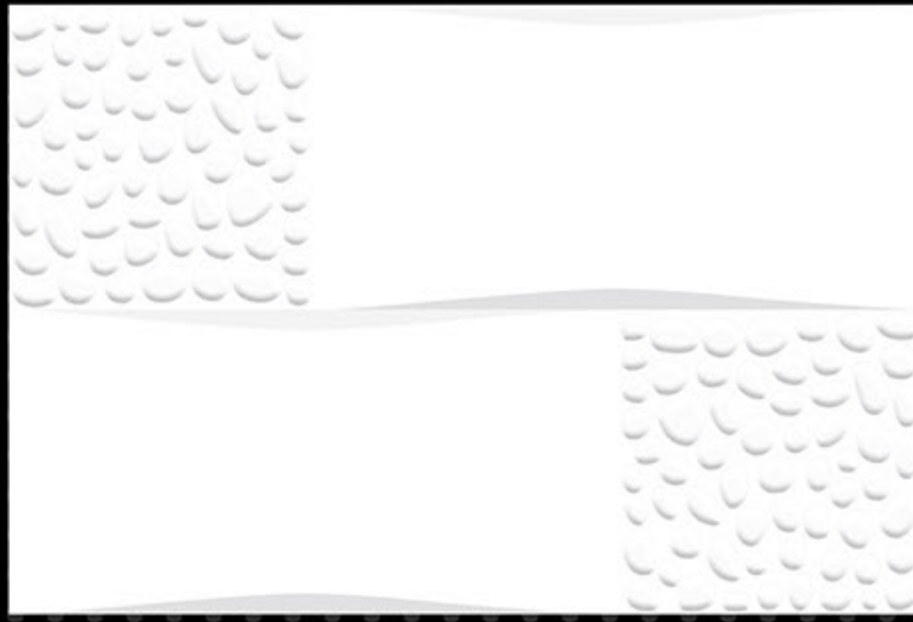
300X450MM

KITCHEN SERIES

REXTRON[®]
DIGITAL WALL TILES

404

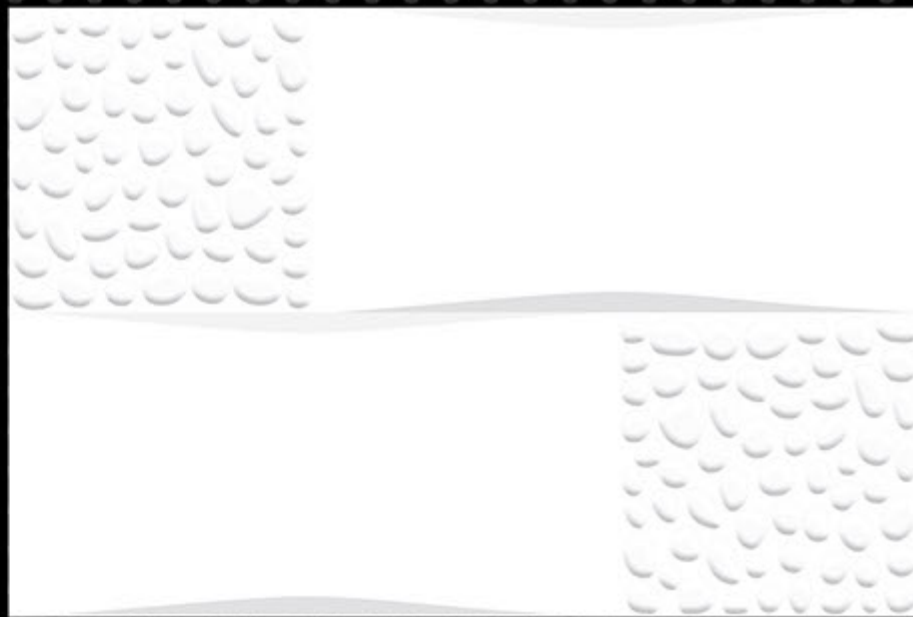
LT



HL-1



LT



300X450MM

KITCHEN SERIES

REXTRON[®]
DIGITAL WALL TILES

405

LT



HL-1
(RANDOM)



LT



NOTE : HL-1 & HL-2 RANDOM PACKING



300X450MM

KITCHEN SERIES

REXTRON[®]
DIGITAL WALL TILES

406

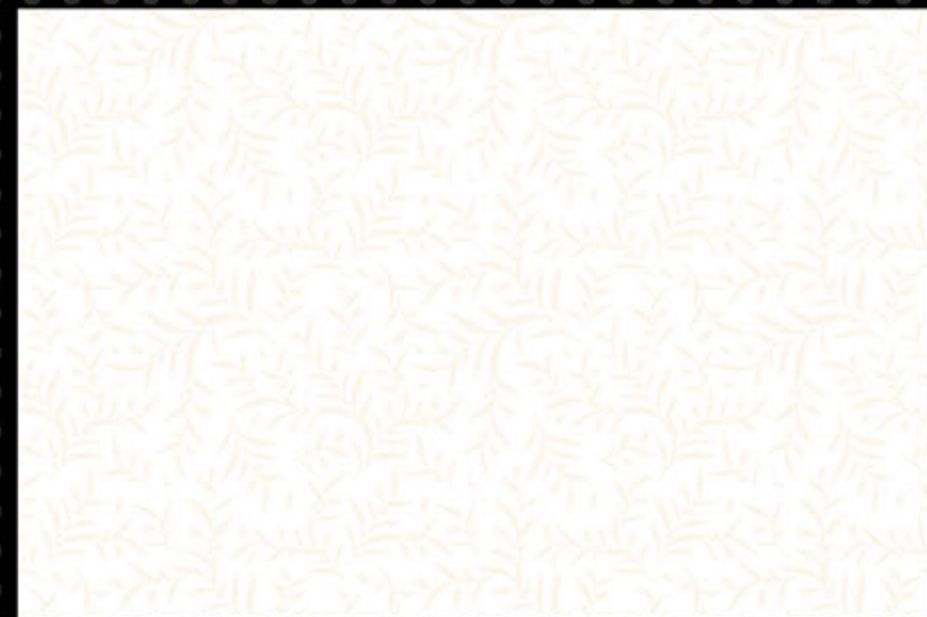
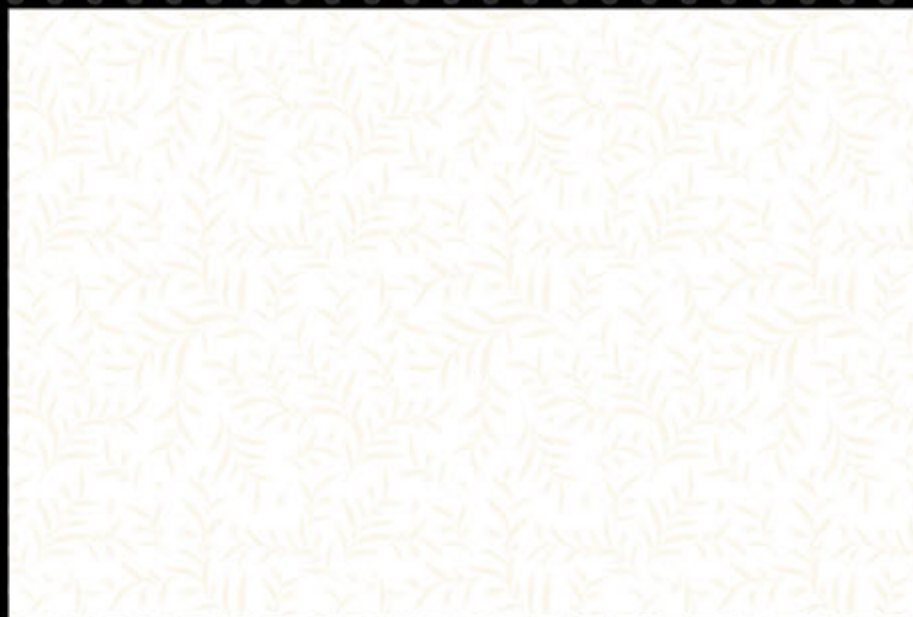
LT



HL-1
(RANDOM)



LT



300X450MM

KITCHEN SERIES

REXTRON[®]
DIGITAL WALL TILES

406

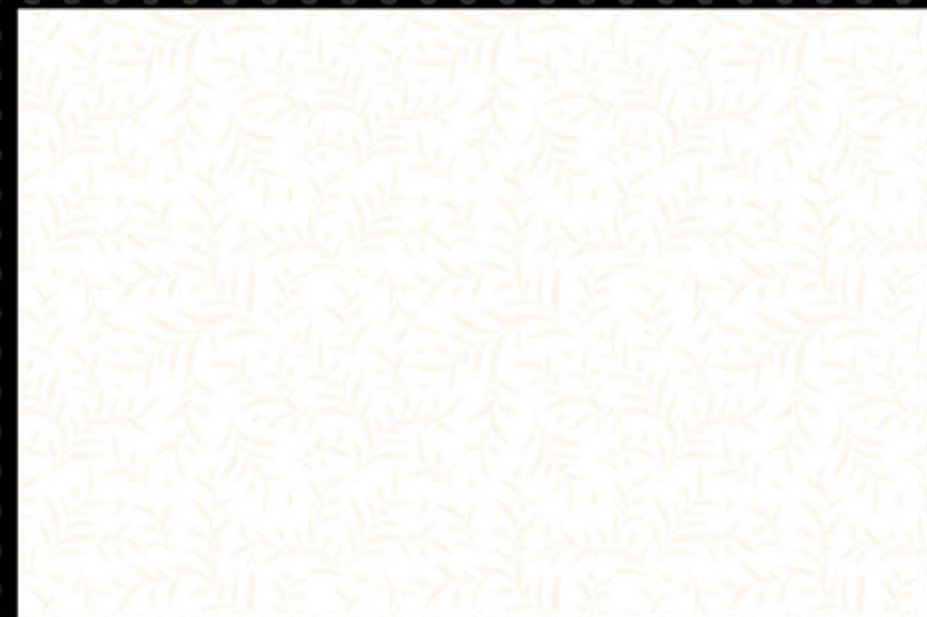
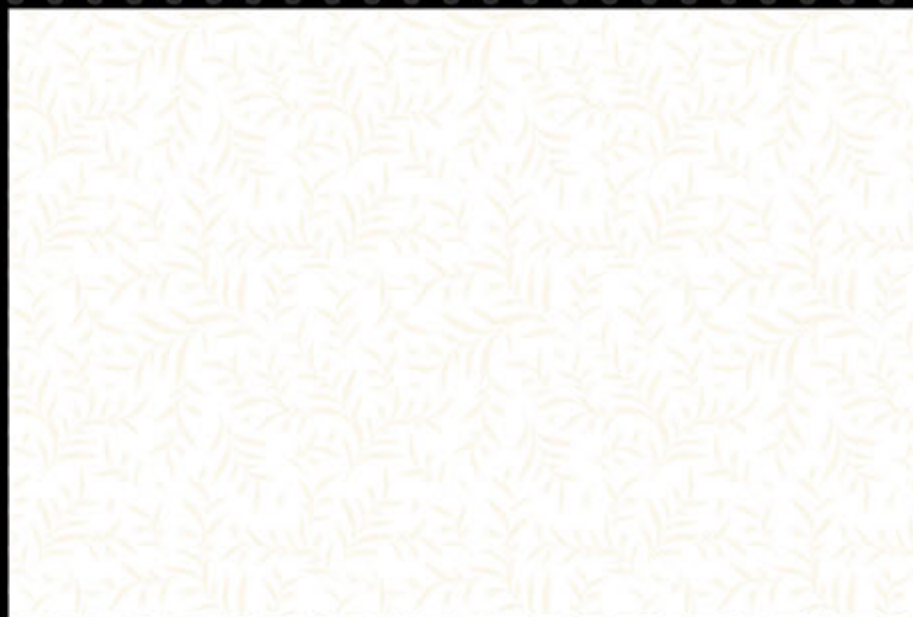
LT



HL-1
(RANDOM)



LT



300X450MM

KITCHEN SERIES

REXTRON[®]
DIGITAL WALL TILES

407

LT



HL-1
(RANDOM)



DK



300X450MM

KITCHEN SERIES

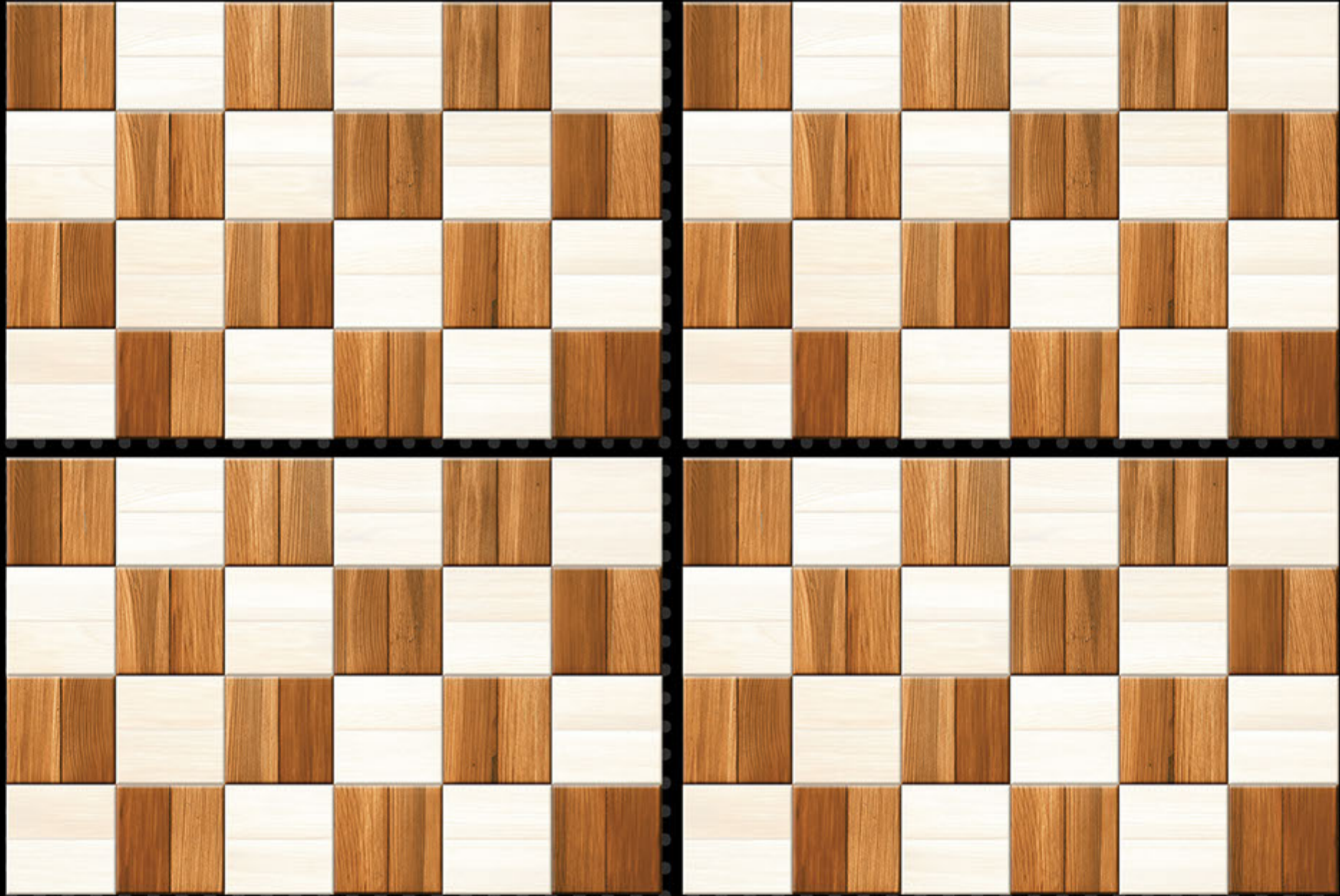
REXTRON[®]
DIGITAL WALL TILES

407

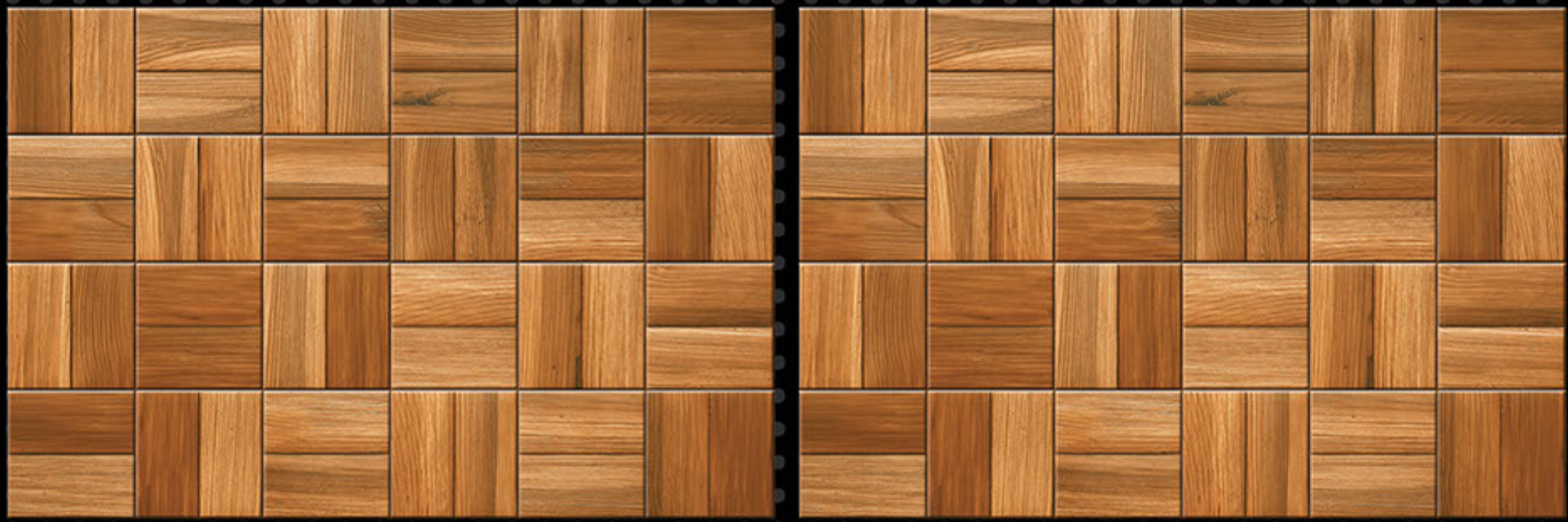
LT



HL-2



DK



300X450MM

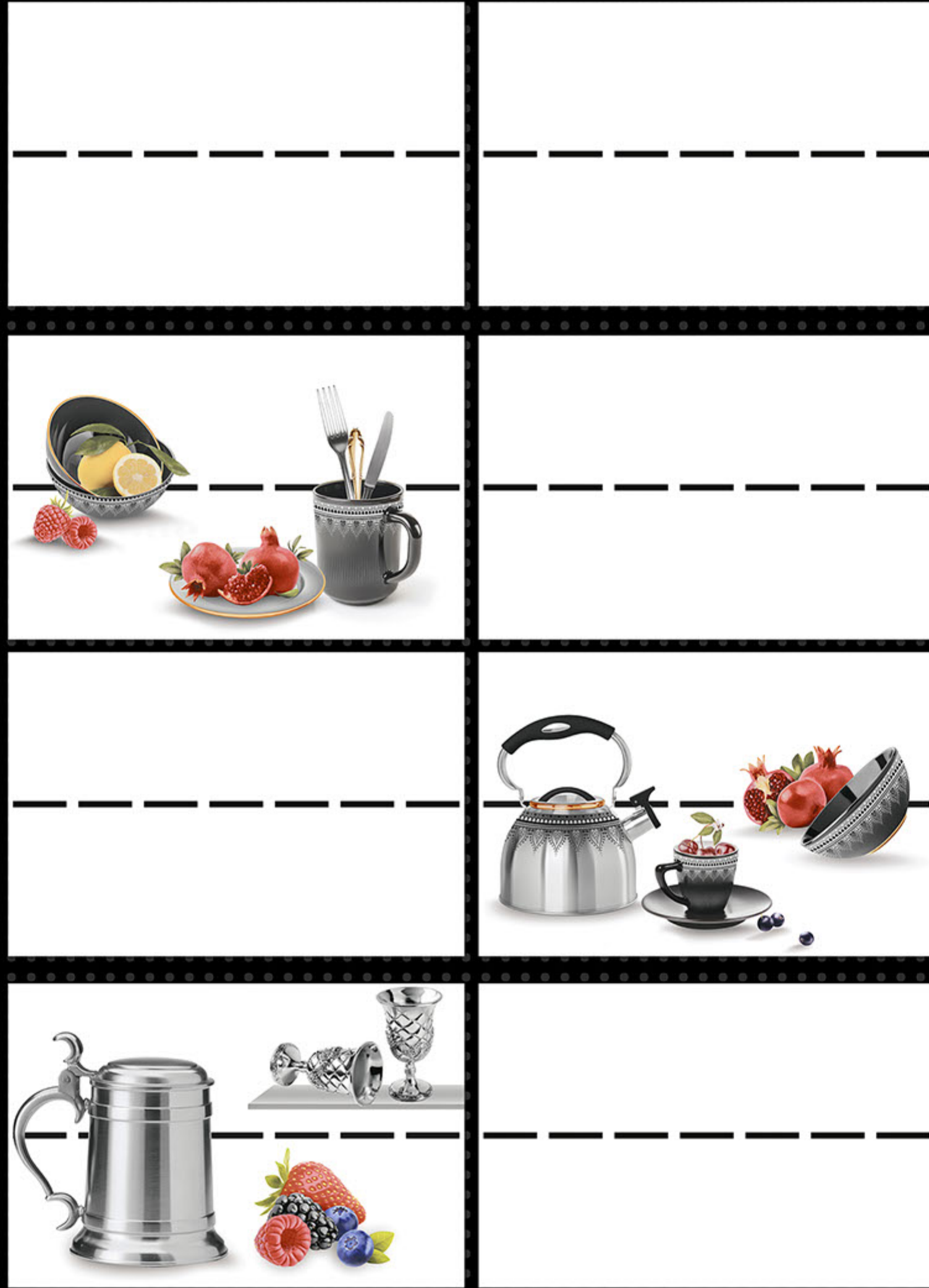
KITCHEN SERIES

REXTRON[®]
DIGITAL WALL TILES

408

408_LT

HL-1
(RANDOM)



300X450MM

KITCHEN SERIES

REXTRON[®]
DIGITAL WALL TILES

409

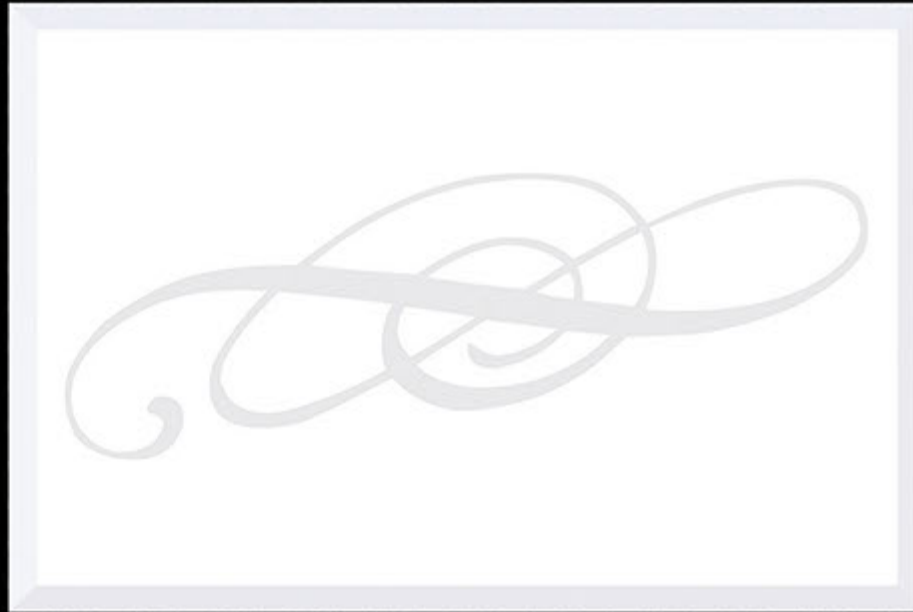
LT



HL-1



LT



300X450MM

KITCHEN SERIES

REXTRON[®]
DIGITAL WALL TILES

410

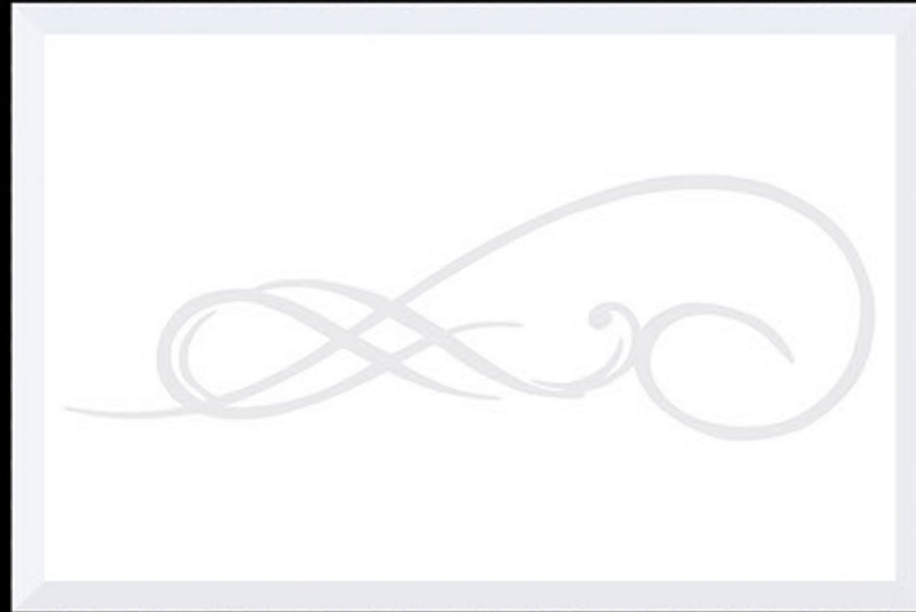
LT



HL-1



LT



300X450MM

KITCHEN SERIES

REXTRON®
DIGITAL WALL TILES

411

LT



HL-1
(RANDOM)



DK



300X450MM

KITCHEN SERIES

REXTRON[®]
DIGITAL WALL TILES

412

LT



HL-1
(RANDOM)



DK



300X450MM

KITCHEN SERIES

REXTRON[®]
DIGITAL WALL TILES

413

LT



HL-1
(RANDOM)



LT



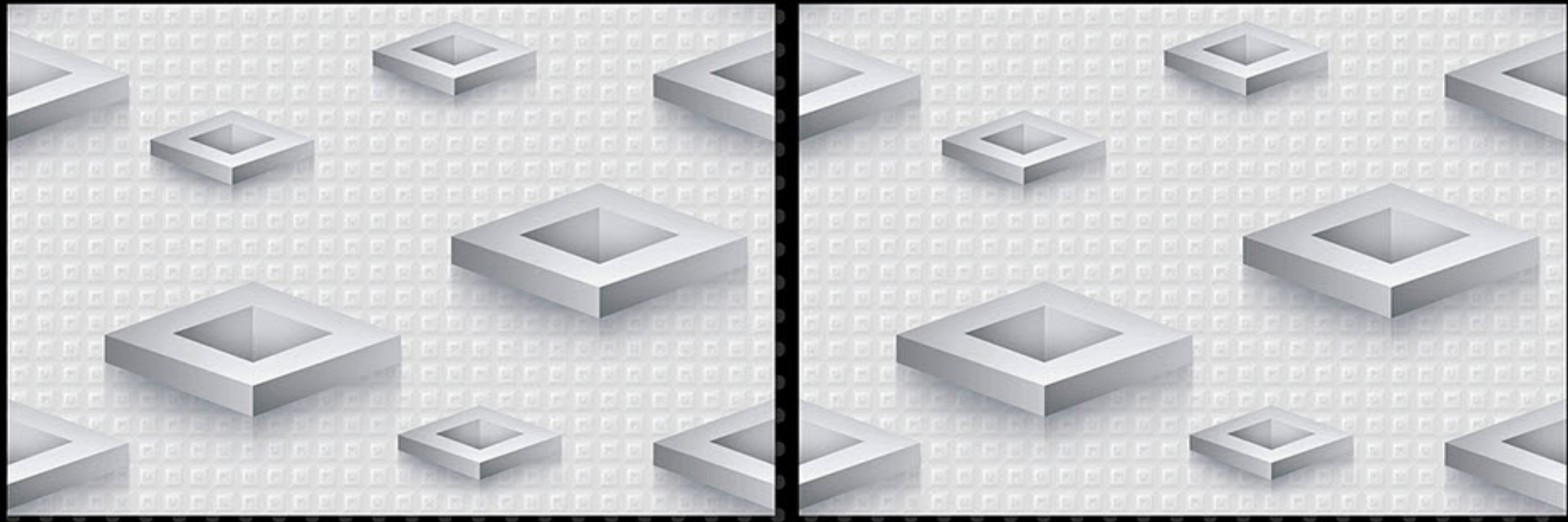
300X450MM

KITCHEN SERIES

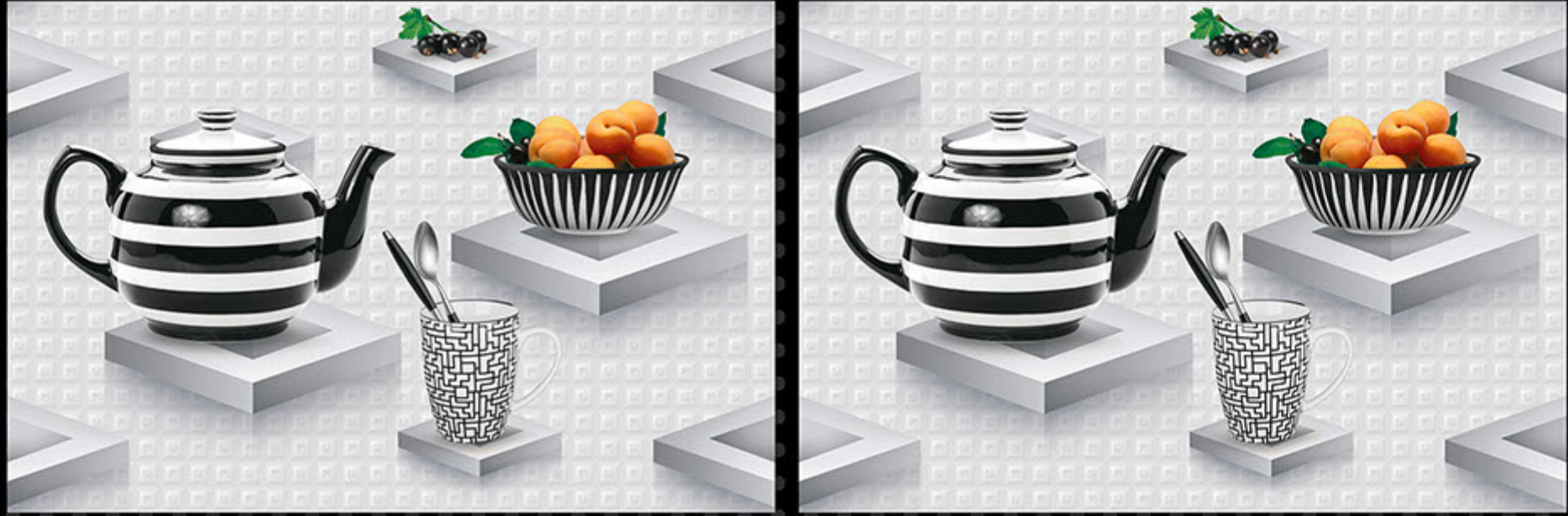
REXTRON[®]
DIGITAL WALL TILES

414

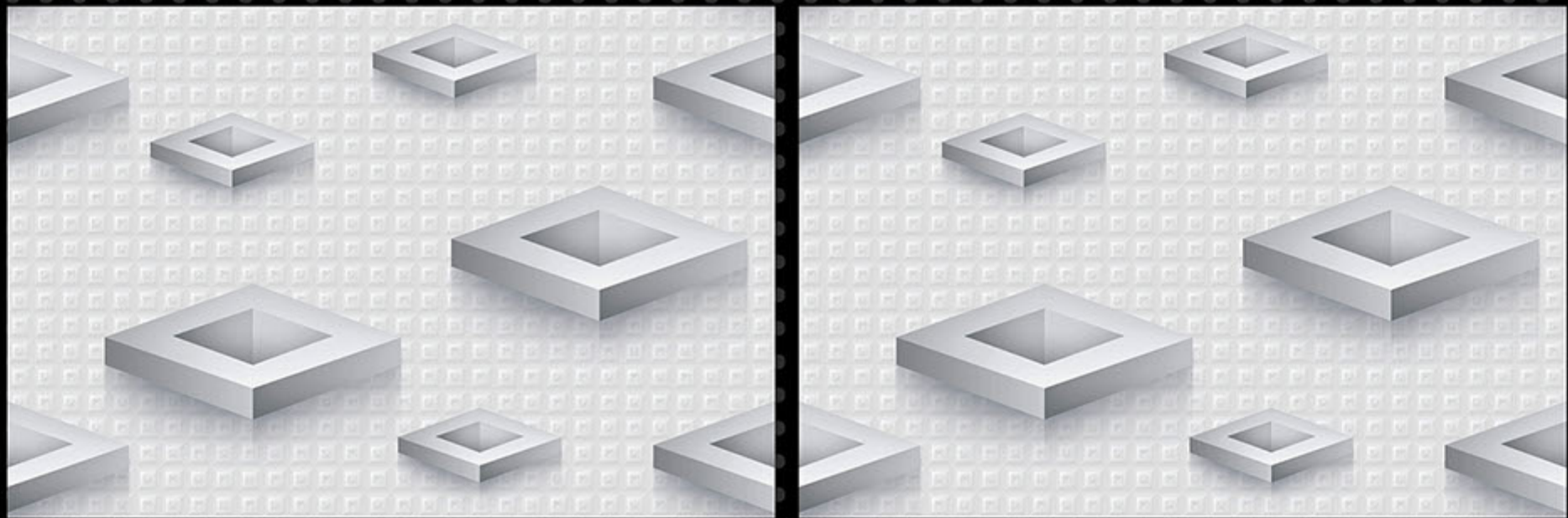
LT



HL-1



LT



300X450MM

KITCHEN SERIES

REXTRON[®]
DIGITAL WALL TILES

415

LT
(RANDOM)



HL-1
(RANDOM)



LT
(RANDOM)



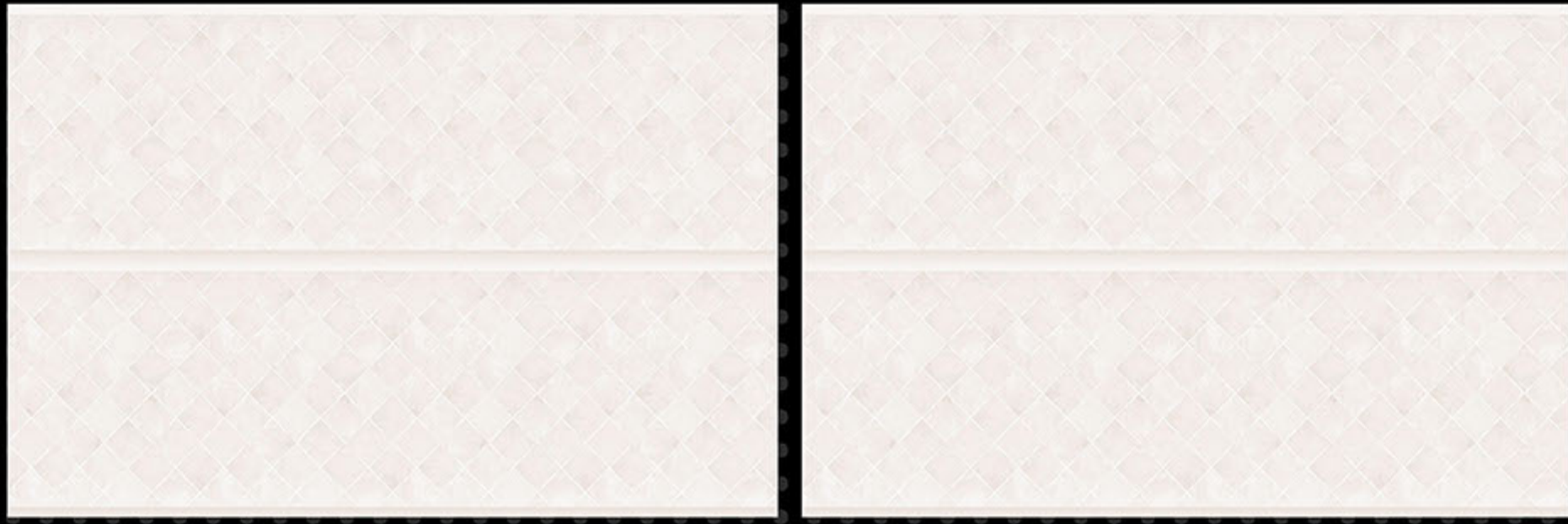
300X450MM

KITCHEN SERIES

REXTRON[®]
DIGITAL WALL TILES

416

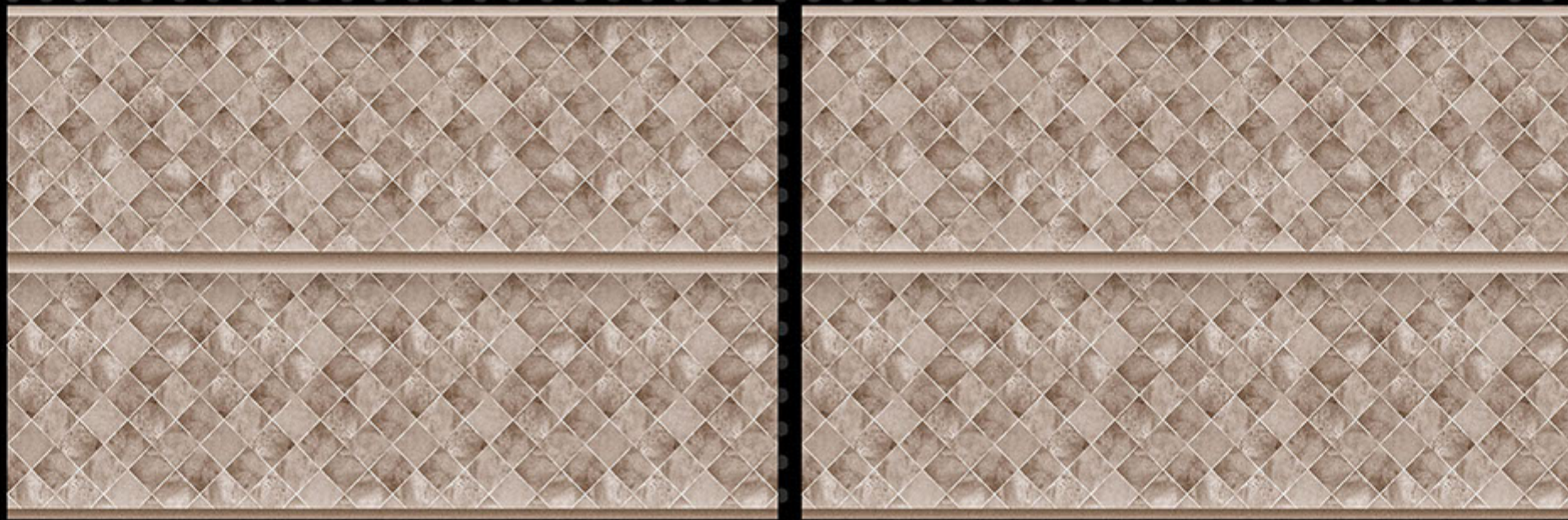
LT



HL-1
(RANDOM)



DK



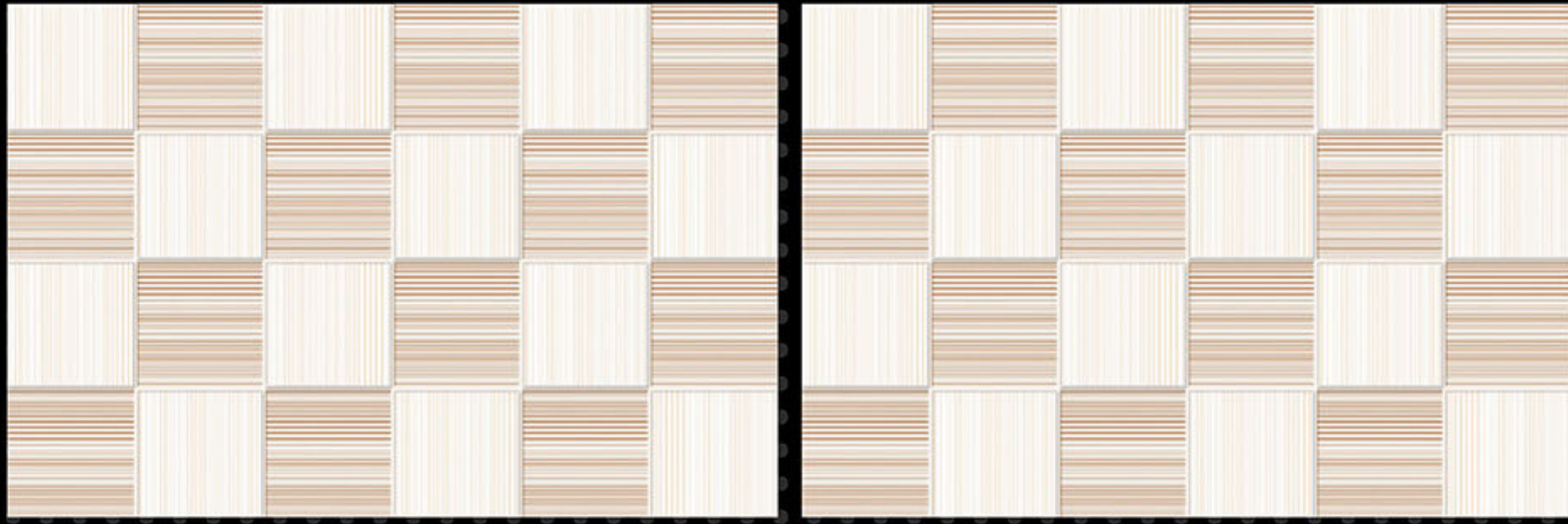
300X450MM

KITCHEN SERIES

REXTRON[®]
DIGITAL WALL TILES

417

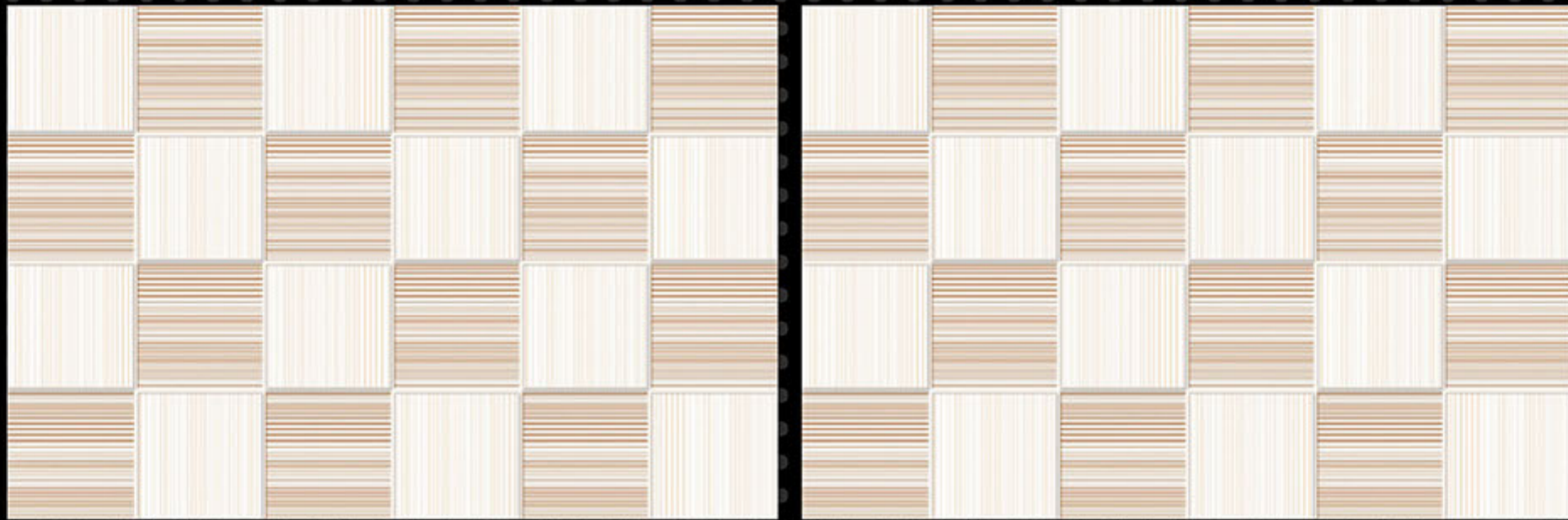
LT



HL-1
(RANDOM)



LT



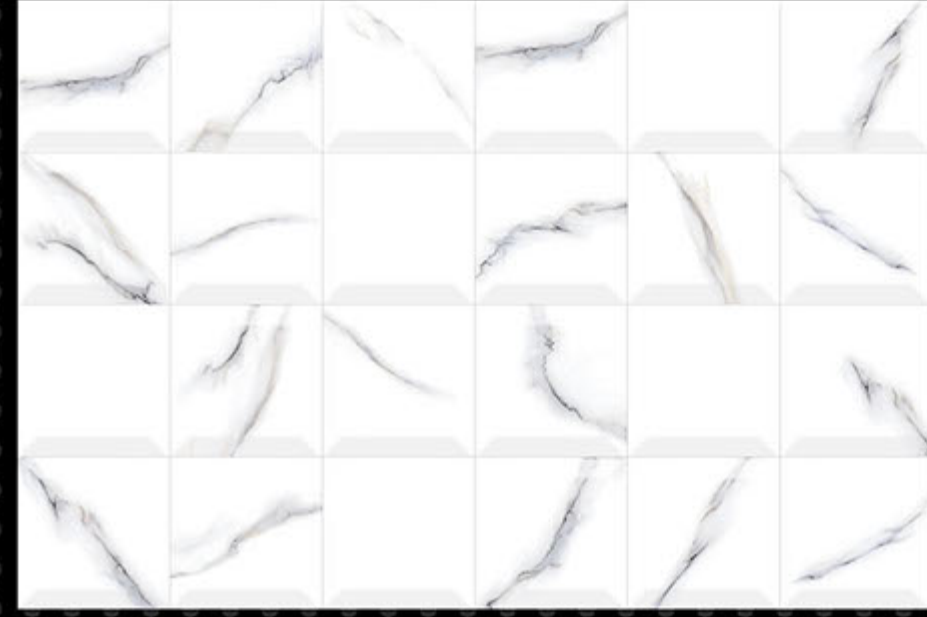
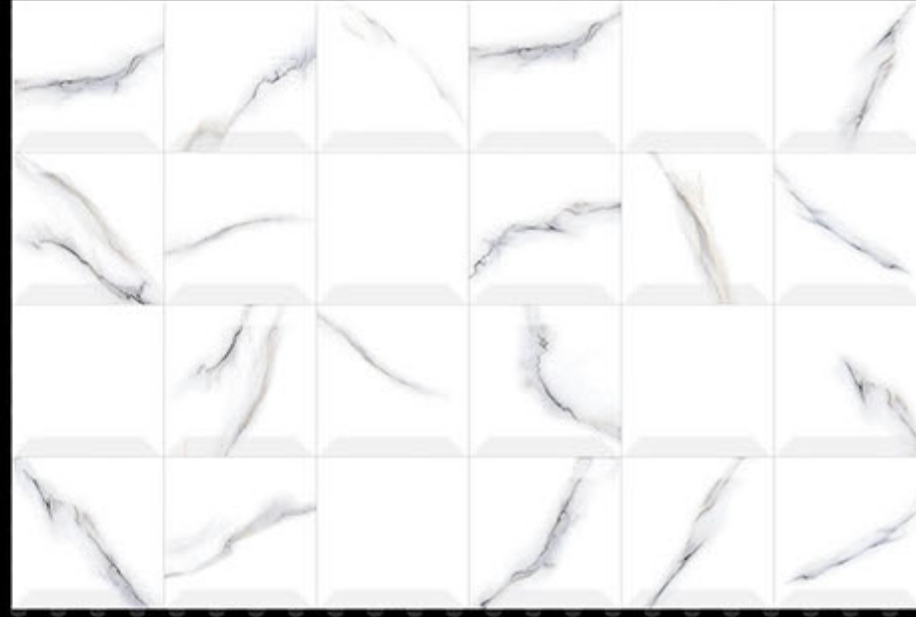
300X450MM

KITCHEN SERIES

REXTRON[®]
DIGITAL WALL TILES

418

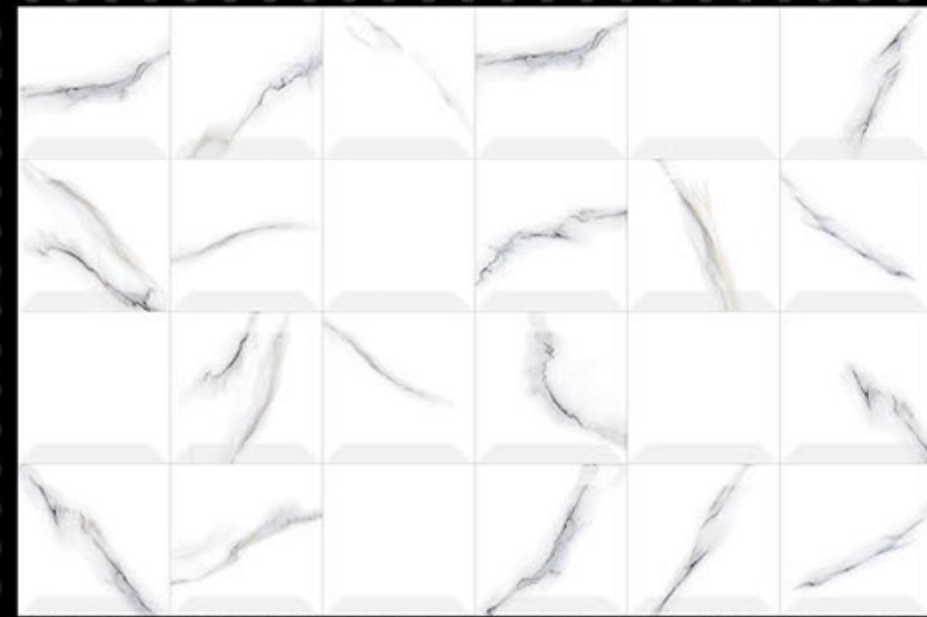
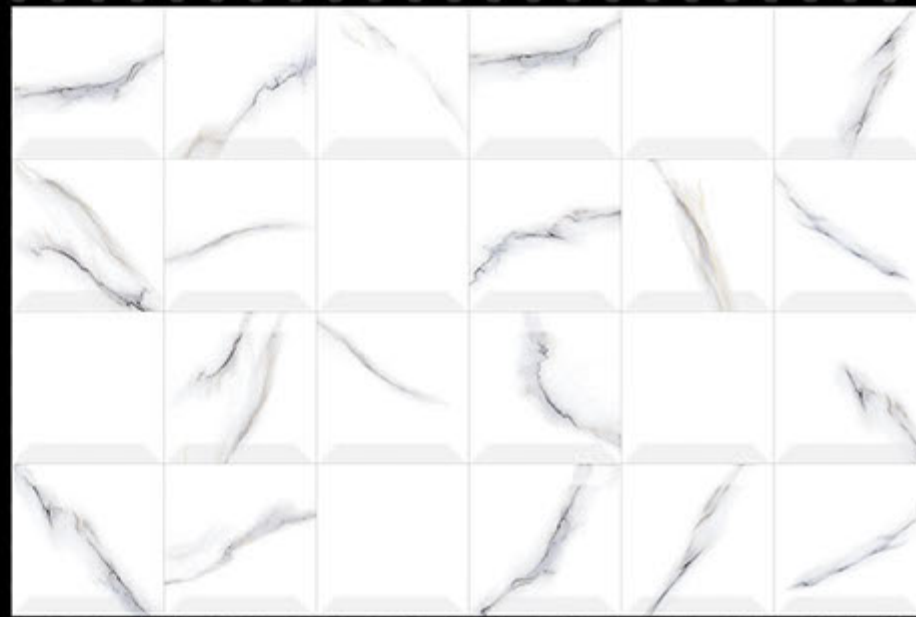
LT



HL-1
(RANDOM)



LT



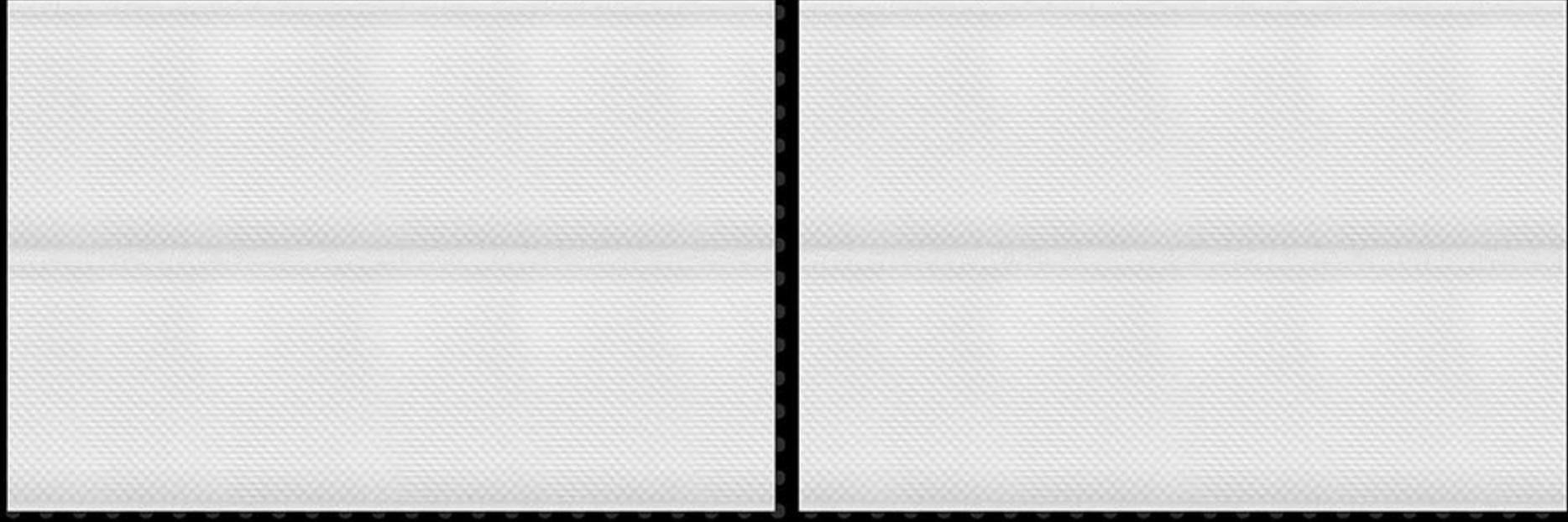
300X450MM

KITCHEN SERIES

REXTRON[®]
DIGITAL WALL TILES

419

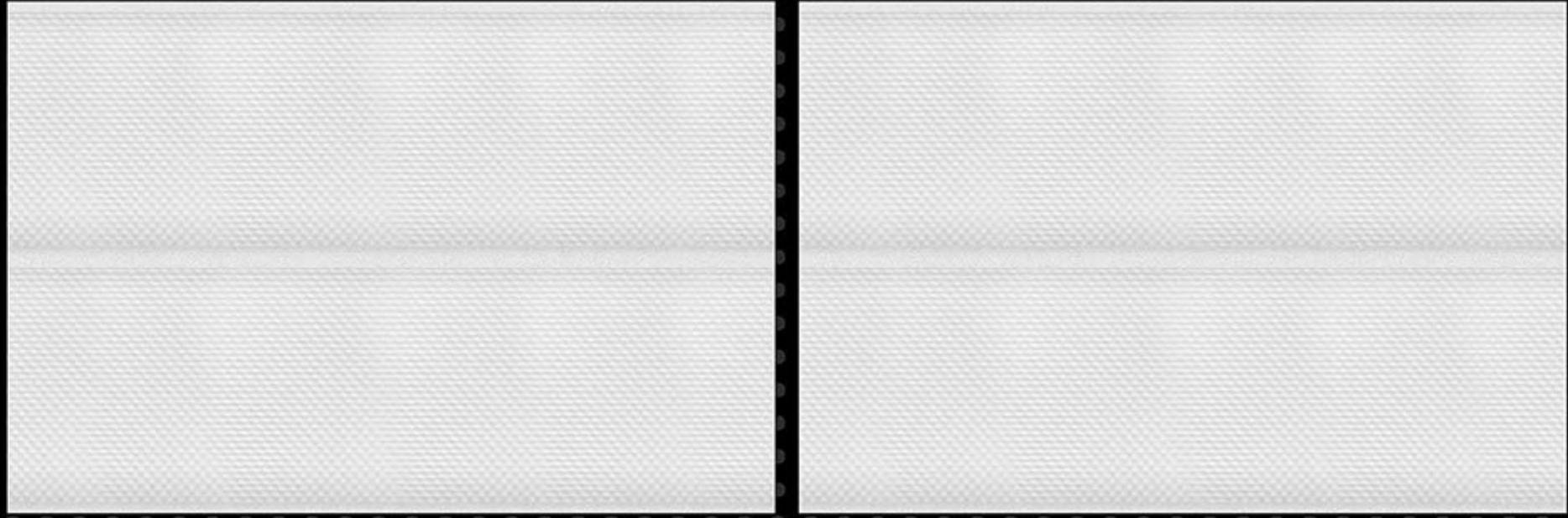
LT



HL-1



LT



300X450MM

KITCHEN SERIES

REXTRON[®]
DIGITAL WALL TILES



3510-LT



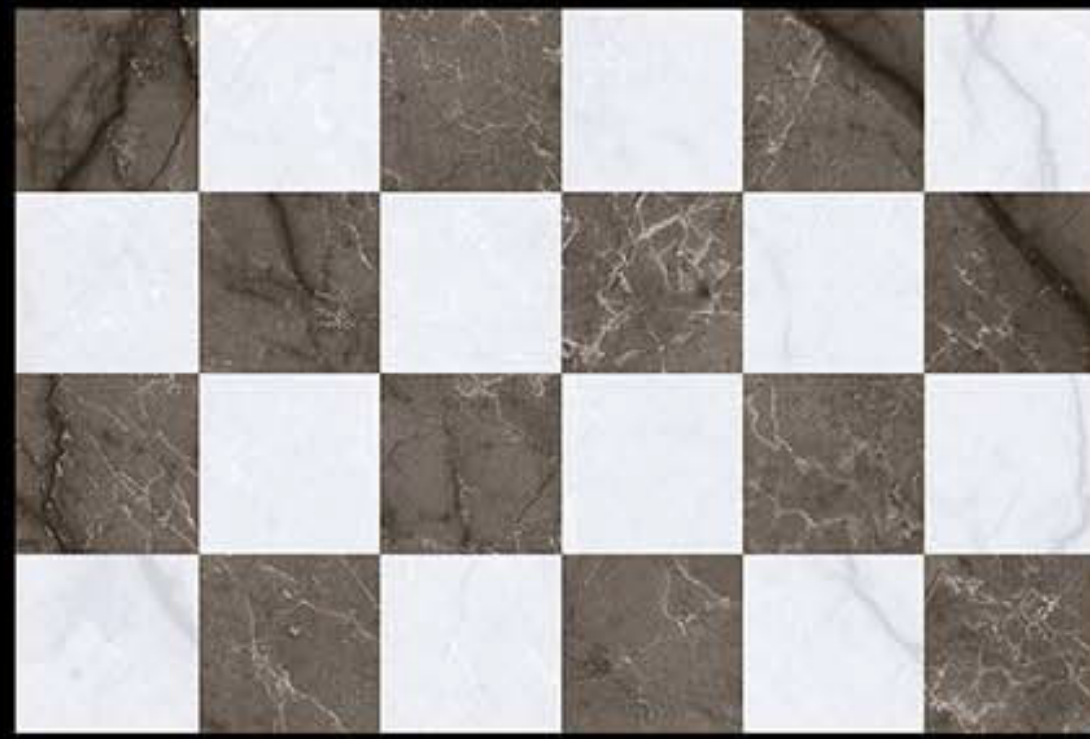
3510-DK



3510-HL-1



3510-HL-2



3510-HL-3



300X450MM

KITCHEN SERIES

REXTRON[®]
DIGITAL WALL TILES



501_LT



501_DK



501_HL-1 (RANDOM)



501_HL-1 (RANDOM)

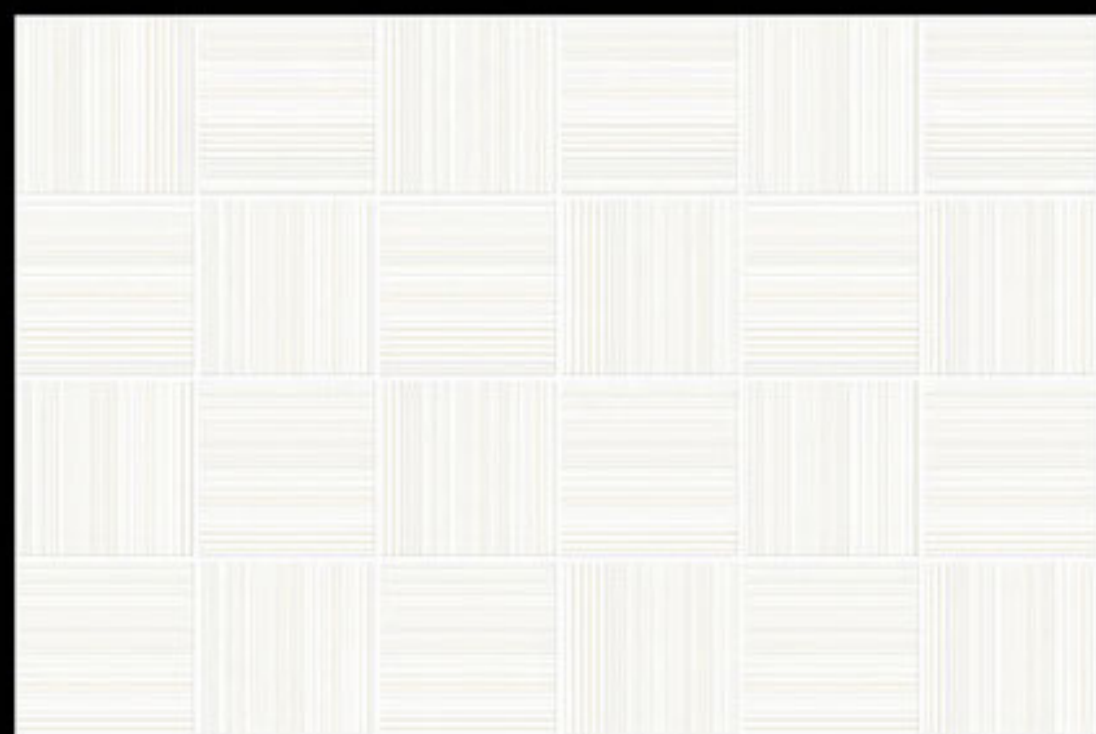
NOT E : HL-1 & HL-5 RANDOM PACKING



300X450MM

KITCHEN SERIES

REXTRON[®]
DIGITAL WALL TILES



501_LT



501_HL2



501_DK



300X450MM

KITCHEN SERIES

REXTRON[®]
DIGITAL WALL TILES



502_HL-1 (RANDOM)



502_HL-1 (RANDOM)



502_HL-1 (RANDOM)



502_HL-1 (RANDOM)



502_LT

NOTE : HL-1 & HL-2 & HL-3 & HL-5 RANDOM PACKING



300X450MM

KITCHEN SERIES

REXTRON[®]
DIGITAL WALL TILES



502_LT



502_HL_4 (BATH)



300X450MM

KITCHEN SERIES

REXTRON[®]
DIGITAL WALL TILES



502_LT



502_HL-8 (RANDOM)



502_HL-8 (RANDOM)



502_HL-8 (RANDOM)

NOTE : HL-8 & HL-9 & HL-10 RANDOM PACKING



300X450MM

KITCHEN SERIES

REXTRON[®]
DIGITAL WALL TILES



502_LT



502_HL-11 (RANDOM)



502_HL-11 (RANDOM)

NOTE : HL-11 & HL-12 RANDOM PACKING



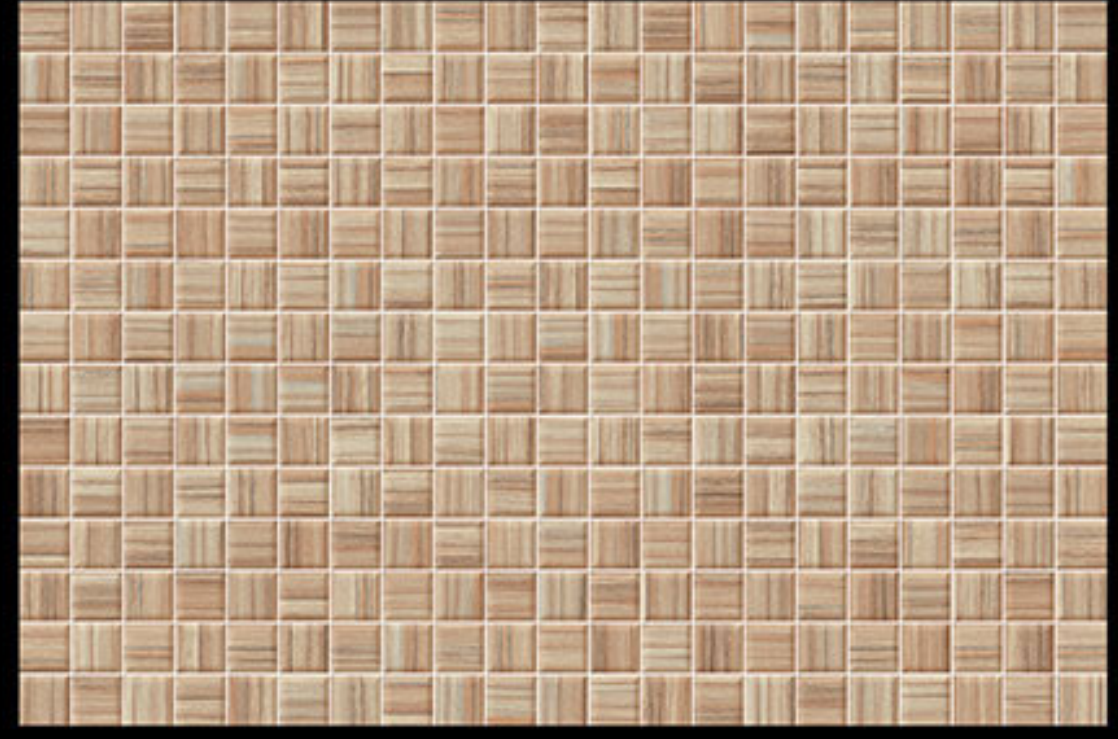
300X450MM

KITCHEN SERIES

REXTRON[®]
DIGITAL WALL TILES



505_LT



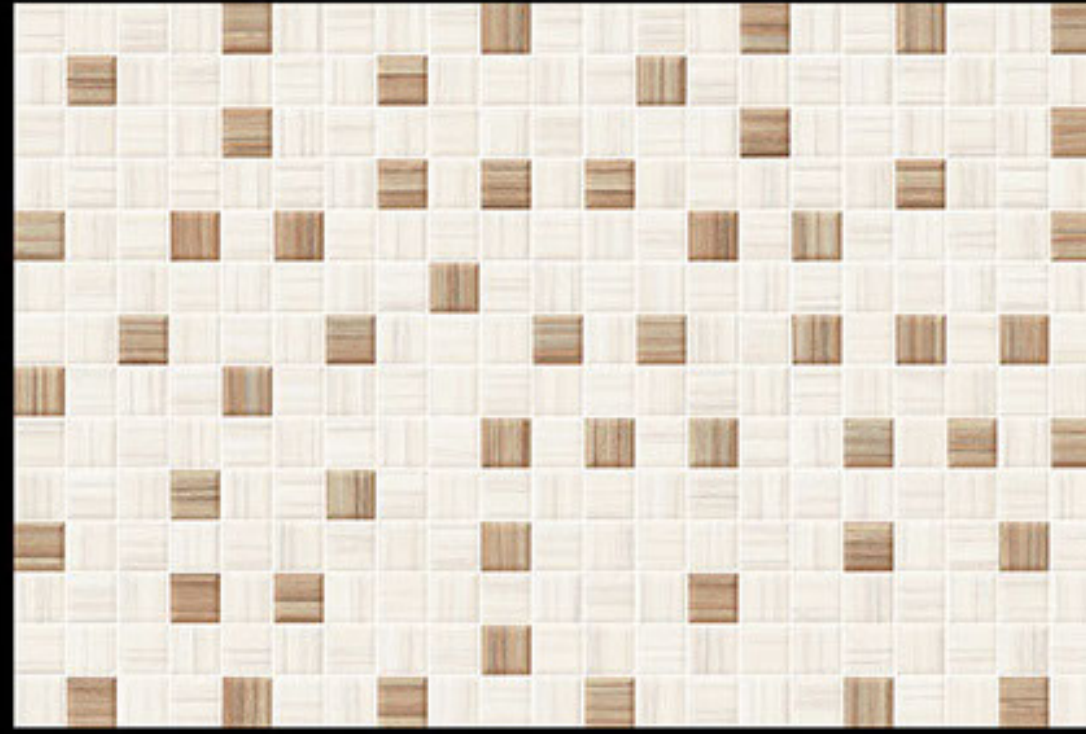
505_DK



505_HL-1 (RANDOM)



505_HL-1 (RANDOM)



505_LT_2

NOTE : HL-1 & HL-2 RANDOM PACKING



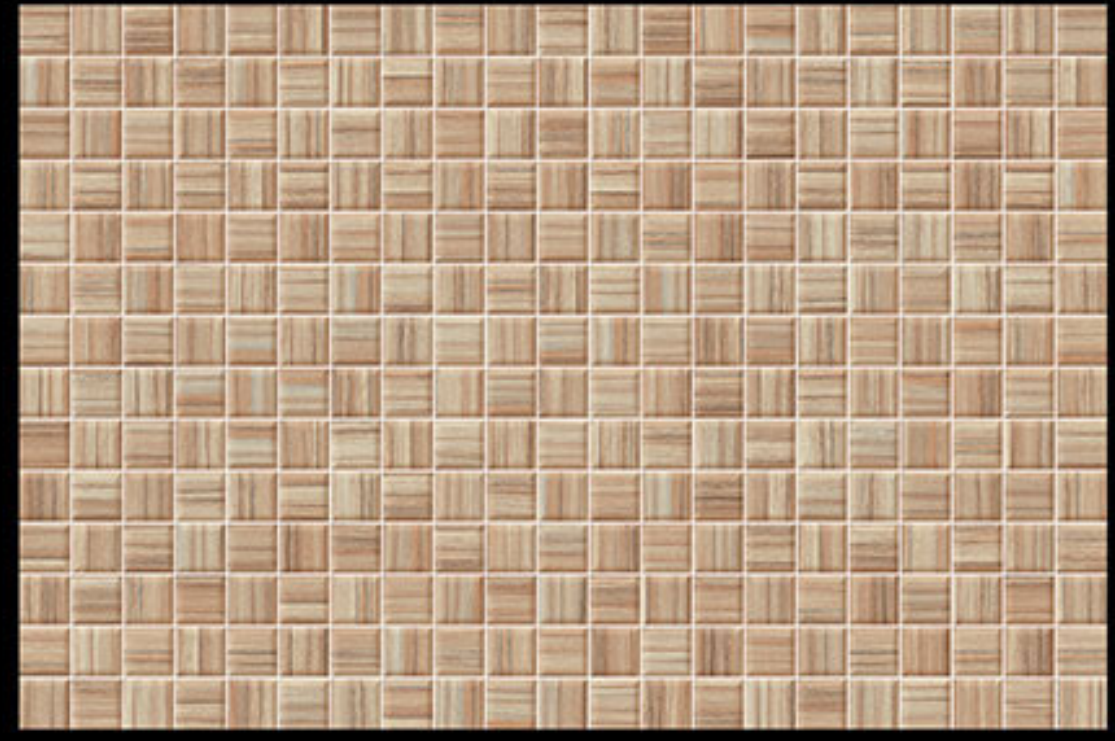
300X450MM

KITCHEN SERIES

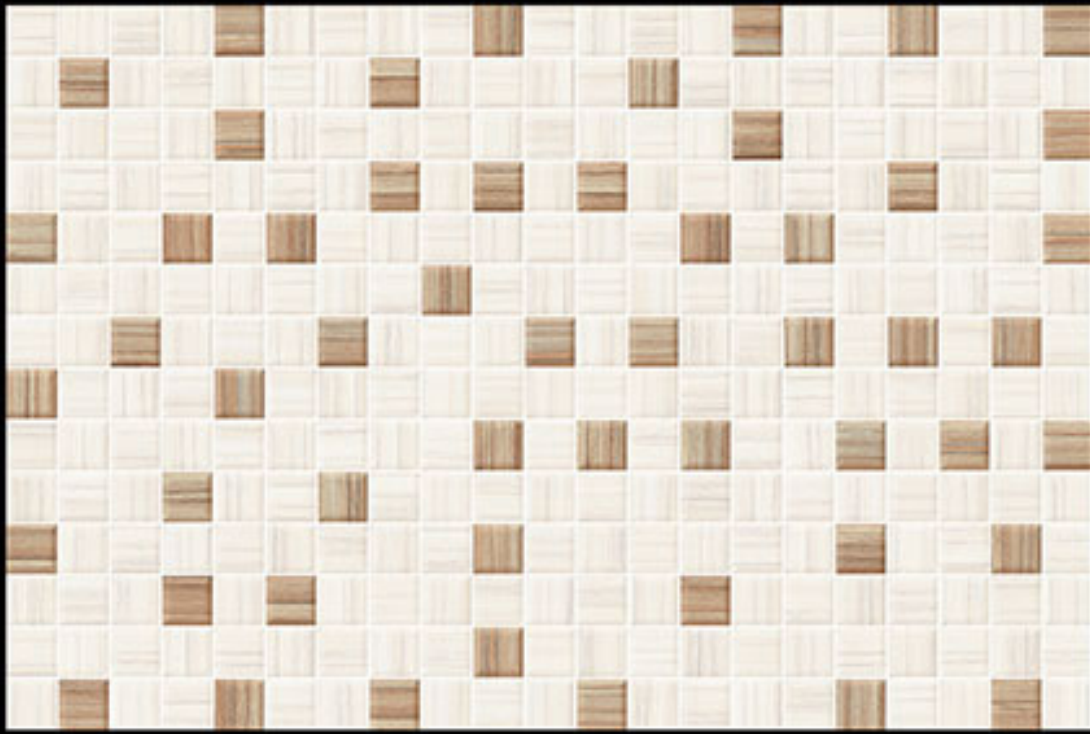
REXTRON[®]
DIGITAL WALL TILES



505_LT



505_DK



505_LT_2



505-HL-5



505_HL_4 (BATH)



300X450MM

KITCHEN SERIES

REXTRON[®]
DIGITAL WALL TILES



506_LT



506_HL-1 (RANDOM)



506_HL-1 (RANDOM)

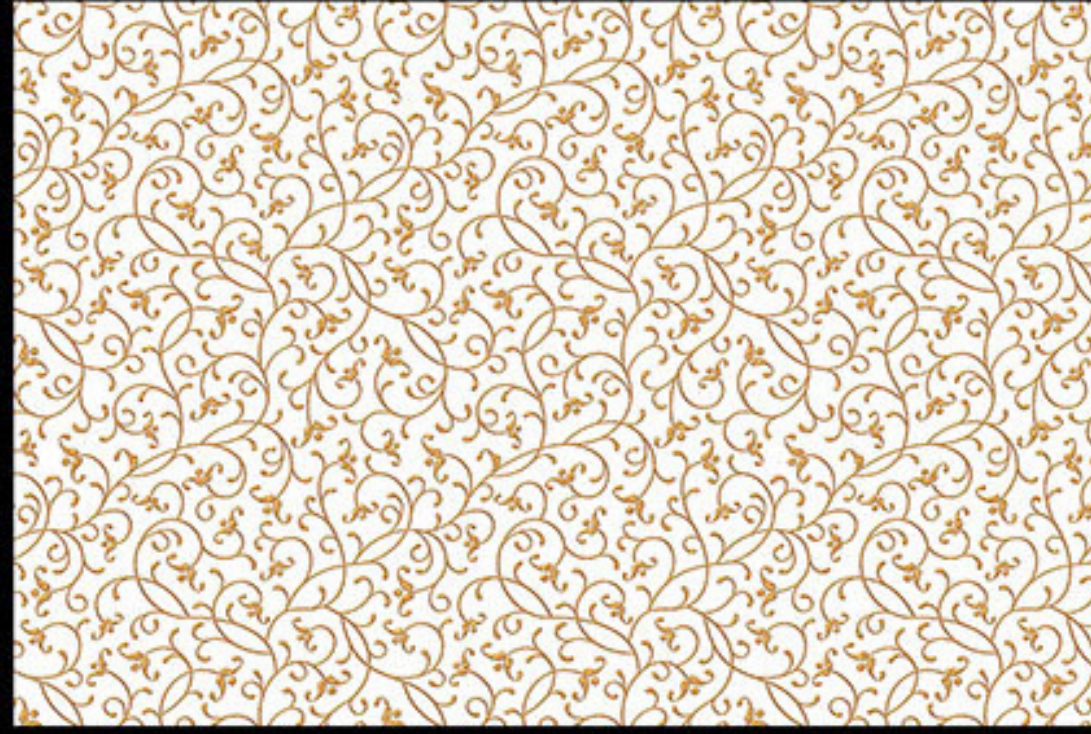
NOTE : HL-1 & HL-2 RANDOM PACKING



300X450MM

KITCHEN SERIES

REXTRON[®]
DIGITAL WALL TILES



506_LT



506_HL_3



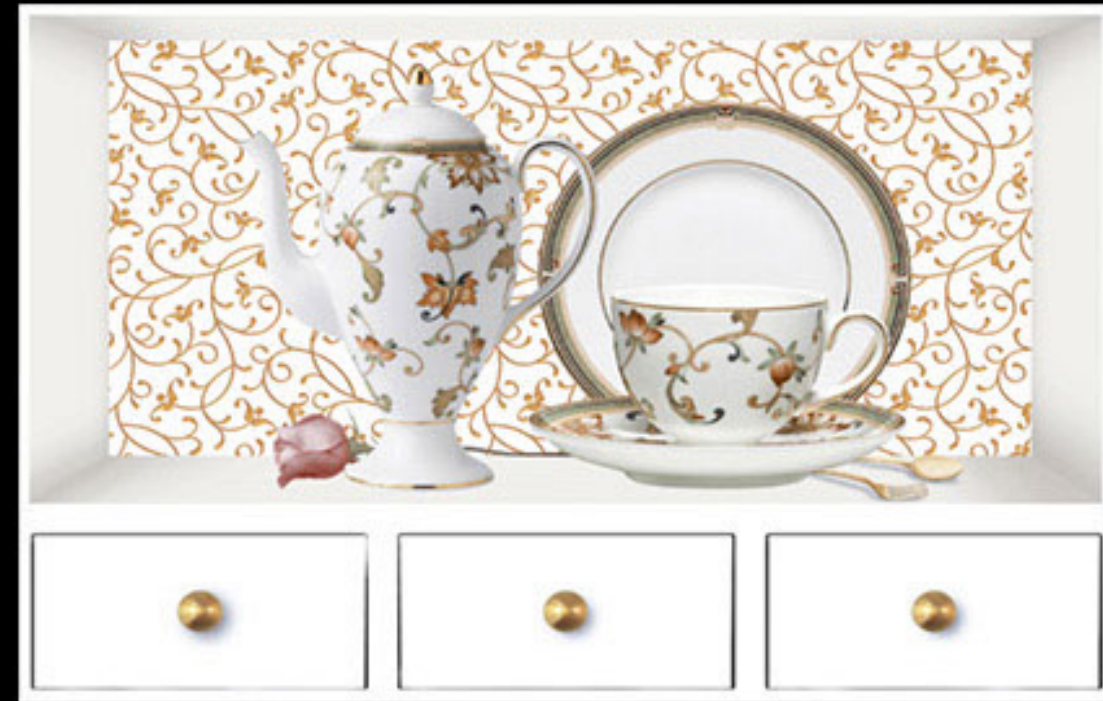
300X450MM

KITCHEN SERIES

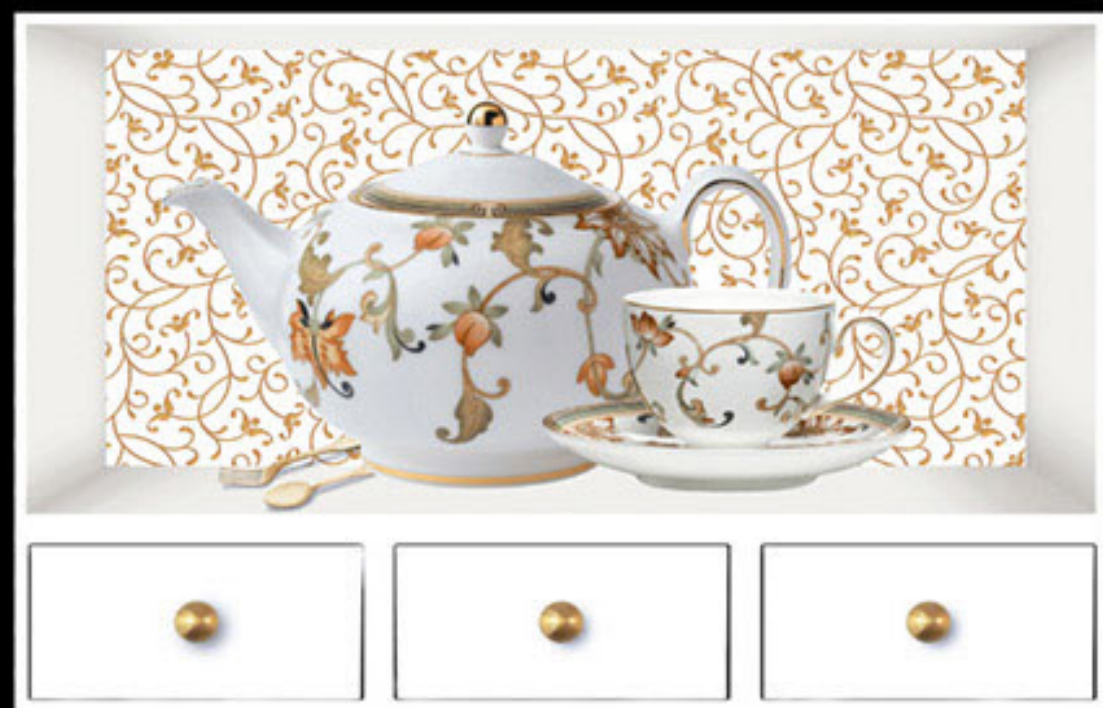
REXTRON[®]
DIGITAL WALL TILES



506_LT



506_HL-4 (RANDOM)



506_HL-4 (RANDOM)

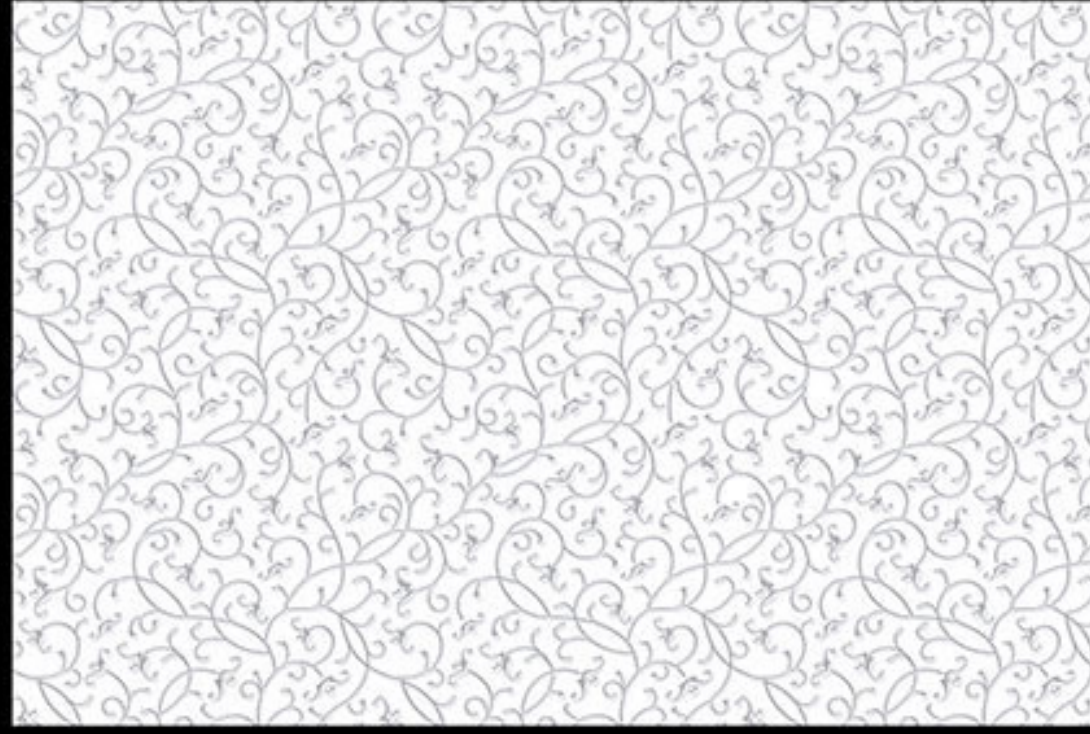
NOTE : HL-4 & HL-5 RANDOM PACKING



300X450MM

KITCHEN SERIES

REXTRON[®]
DIGITAL WALL TILES



507-LT



507_HL-1 (RANDOM)



507_HL-1 (RANDOM)

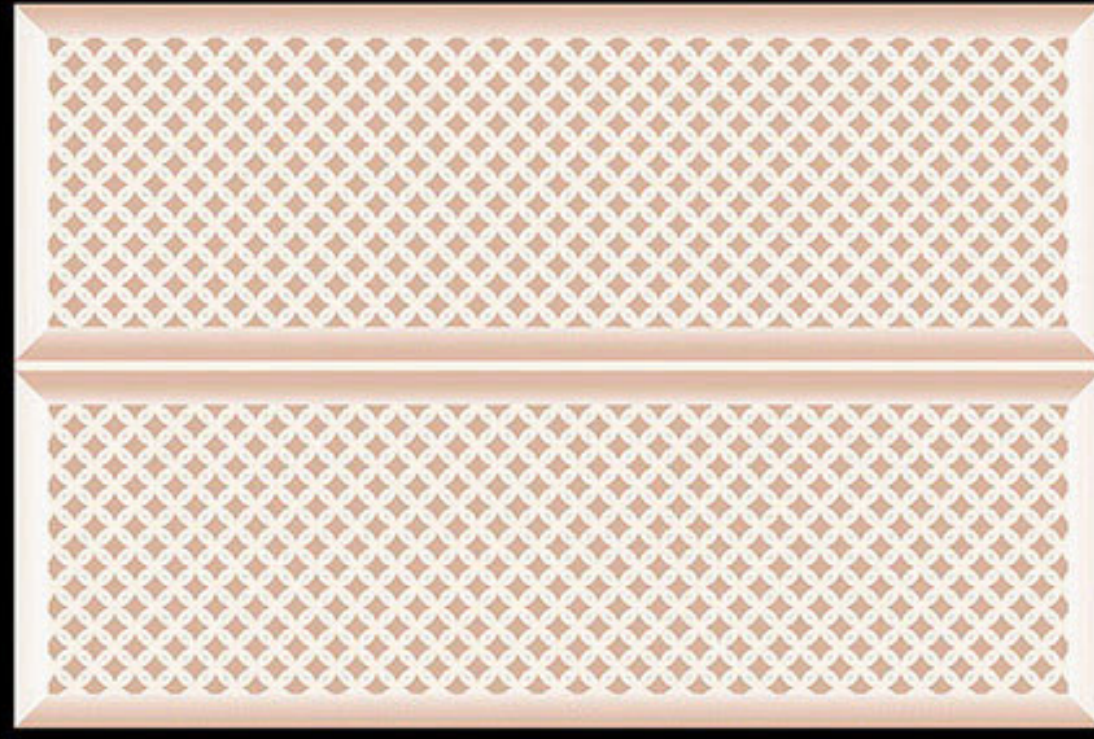
NOTE : HL-1 & HL-2 RANDOM PACKING



300X450MM

KITCHEN SERIES

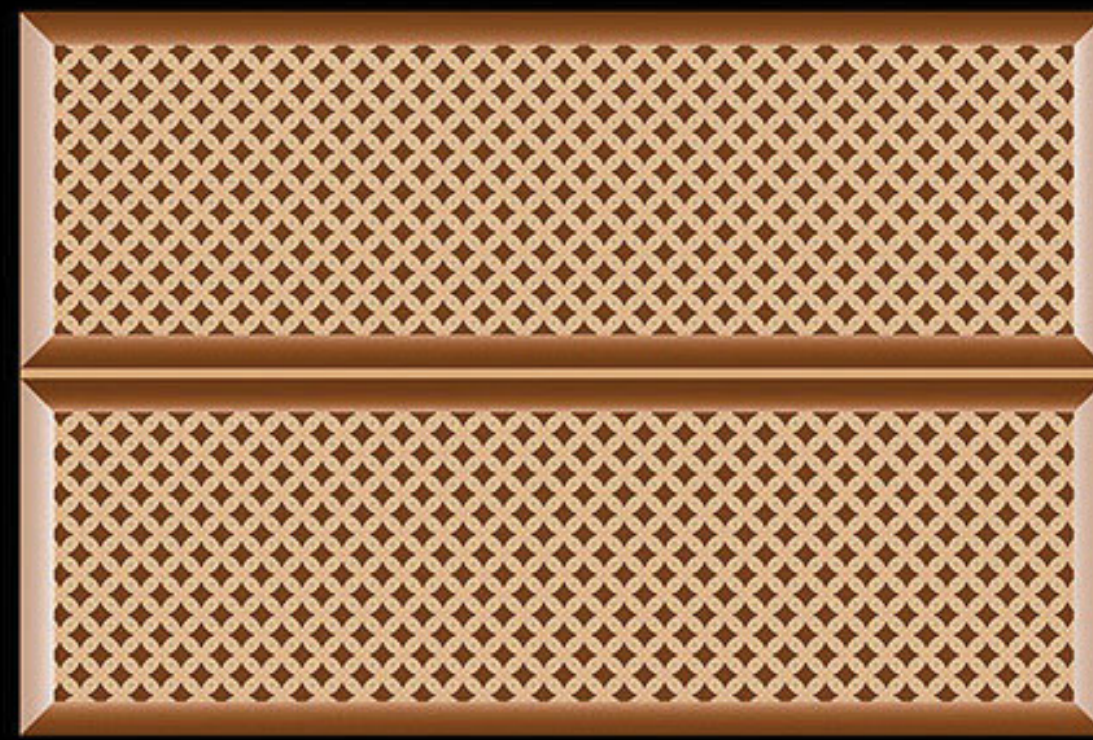
REXTRON[®]
DIGITAL WALL TILES



511_LT



511-HL_2



511_DK



300X450MM

KITCHEN SERIES

REXTRON[®]
DIGITAL WALL TILES



514-LT



514-DK



514_HL-1 (RANDOM)



514_HL-1 (RANDOM)

NOTE : HL-1 & HL-3 & HL-4 & HL-5 & HL-9 RANDOM PACKING



300X450MM

KITCHEN SERIES

REXTRON[®]
DIGITAL WALL TILES



514-LT



514-DK



514_HL-1 (RANDOM)



514_HL-1 (RANDOM)



514_HL-1 (RANDOM)

NOTE : HL-1 & HL-3 & HL-4 & HL-5 & HL-9 RANDOM PACKING



300X450MM

KITCHEN SERIES

REXTRON[®]
DIGITAL WALL TILES



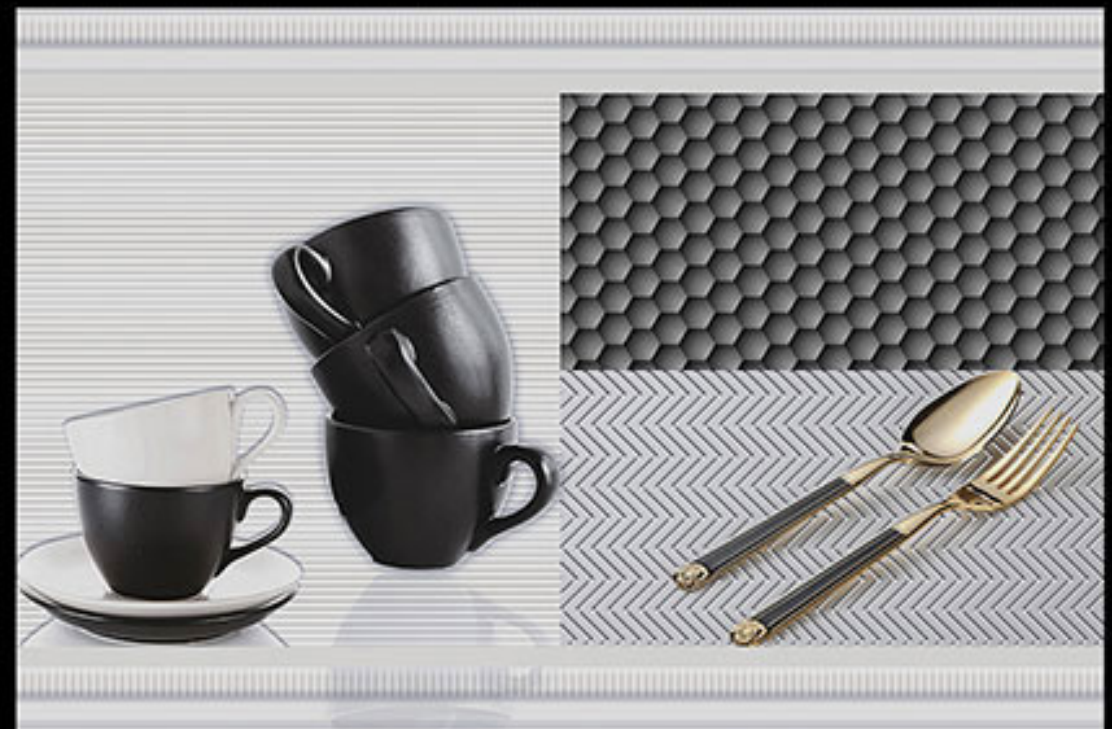
519-LT



519_HL-1 (RANDOM)



519_HL-1 (RANDOM)



519_HL-1 (RANDOM)

NOTE : HL-1 & HL-2 & HL-4 RANDOM PACKING



300X450MM

KITCHEN SERIES

REXTRON[®]
DIGITAL WALL TILES



520_HL-1 (RANDOM)



520_HL-1 (RANDOM)



520_HL-1 (RANDOM)



520_HL-1 (RANDOM)



520-LT

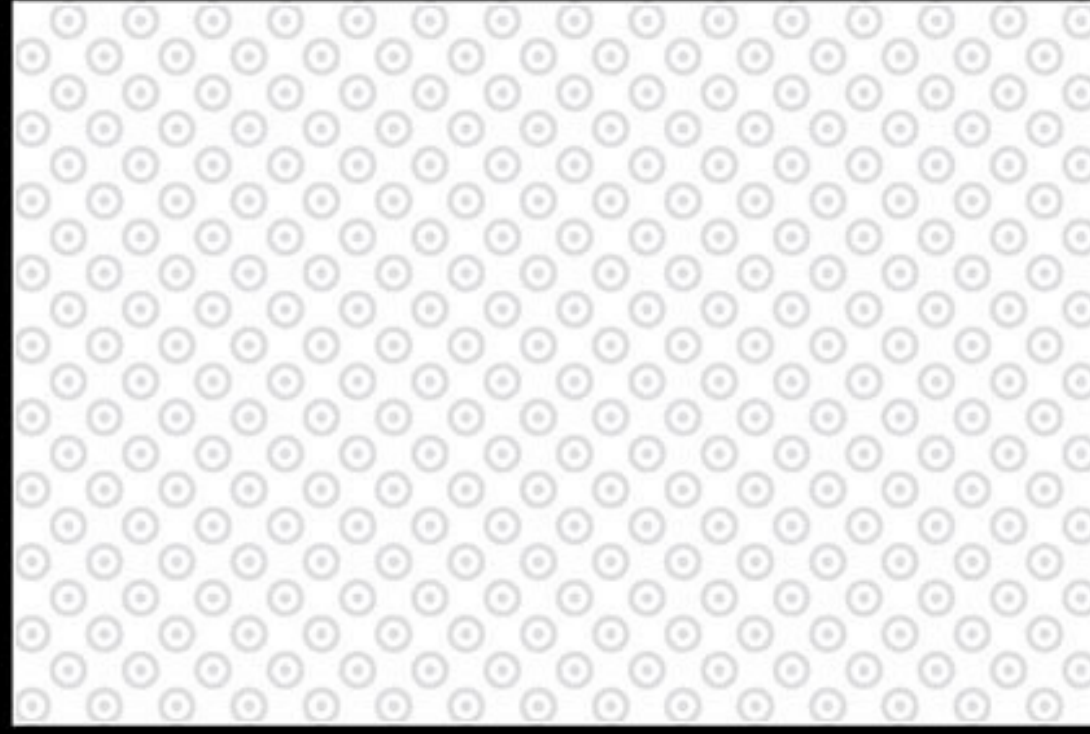
NOTE : HL-1 & HL-2 & HL-3 & HL-4 RANDOM PACKING



300X450MM

KITCHEN SERIES

REXTRON[®]
DIGITAL WALL TILES



522-LT



522_HL-1 (RANDOM)



522_HL-1 (RANDOM)

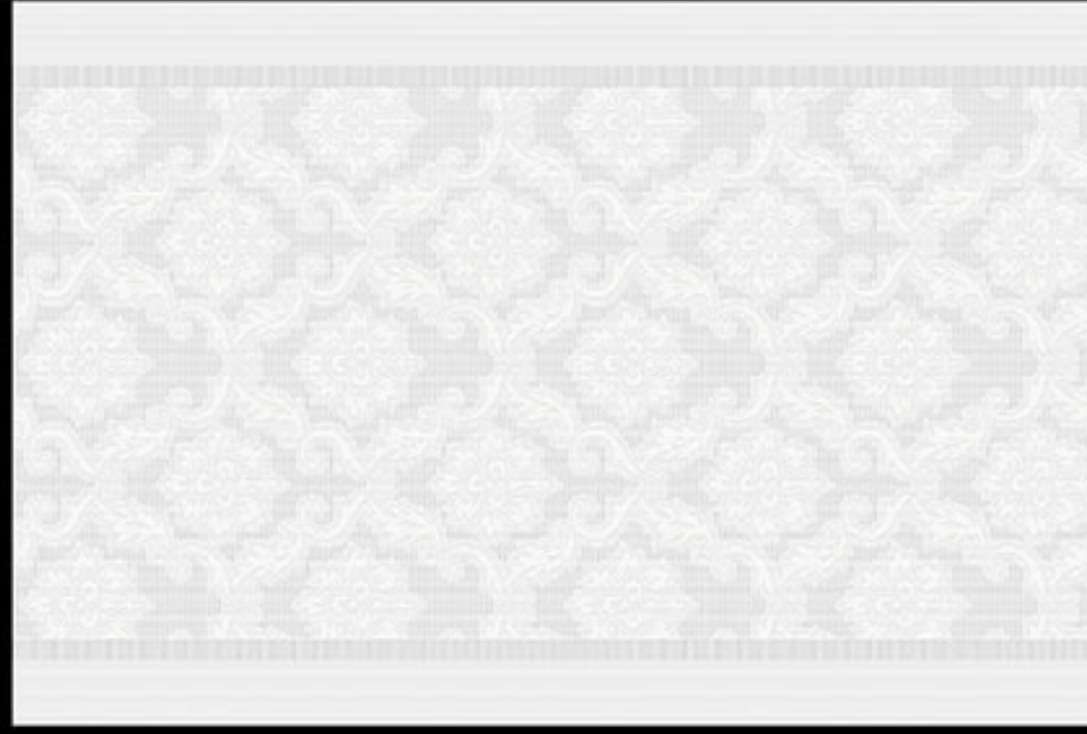
NOTE : HL-1 & HL-2 RANDOM PACKING



300X450MM

KITCHEN SERIES

REXTRON[®]
DIGITAL WALL TILES



525-LT



525_HL-1 (RANDOM)



525_HL-1 (RANDOM)

NOTE : HL-1 & HL-2 RANDOM PACKING



300X450MM

KITCHEN SERIES

REXTRON[®]
DIGITAL WALL TILES



528-LT



528_HL-1 (RANDOM)



528_HL-1 (RANDOM)

NOTE : HL-1 & HL-2 RANDOM PACKING



300X450MM

KITCHEN SERIES

REXTRON[®]
DIGITAL WALL TILES



533-LT



533_HL-1 (RANDOM)



533_HL-1 (RANDOM)

NOTE : HL-1 & HL-2 RANDOM PACKING



300X450MM

KITCHEN SERIES

REXTRON[®]
DIGITAL WALL TILES



535-LT



535_HL-1 (RANDOM)



535_HL-1 (RANDOM)



535_HL-1 (RANDOM)

NOTE : HL-1 & HL-2 & HL-3 RANDOM PACKING



300X450MM

KITCHEN SERIES

REXTRON[®]
DIGITAL WALL TILES



535-LT



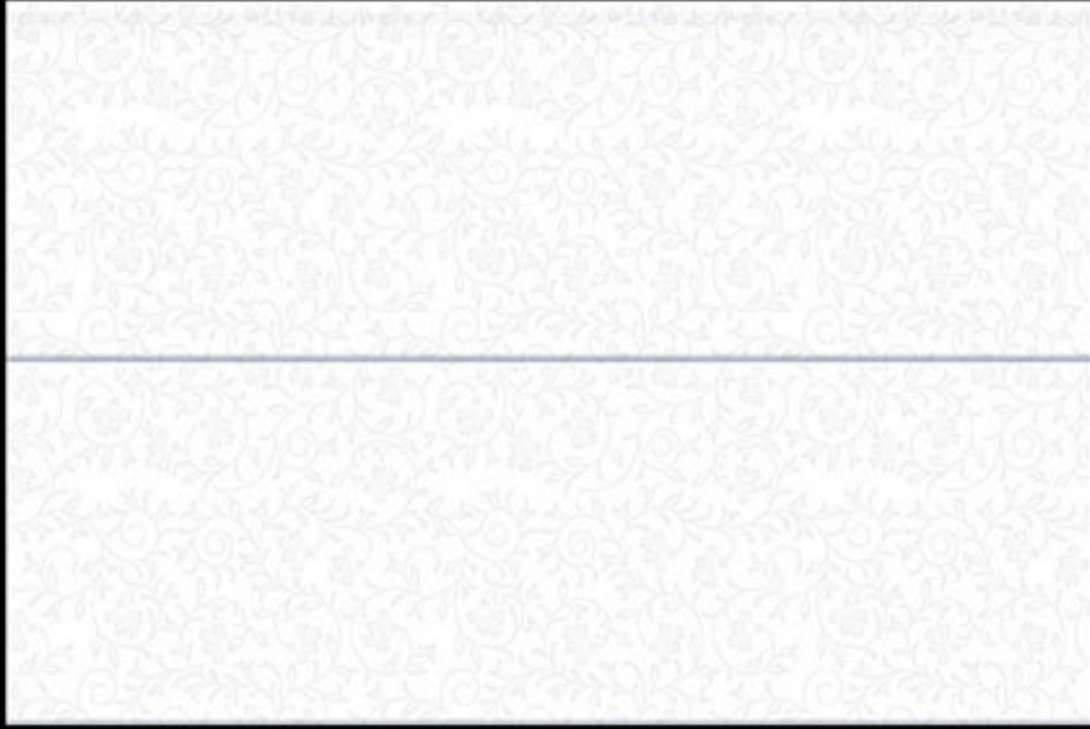
535-HL-4



300X450MM

KITCHEN SERIES

REXTRON[®]
DIGITAL WALL TILES



536-LT



536-HL-1 (Random)



536-HL-1 (Random)



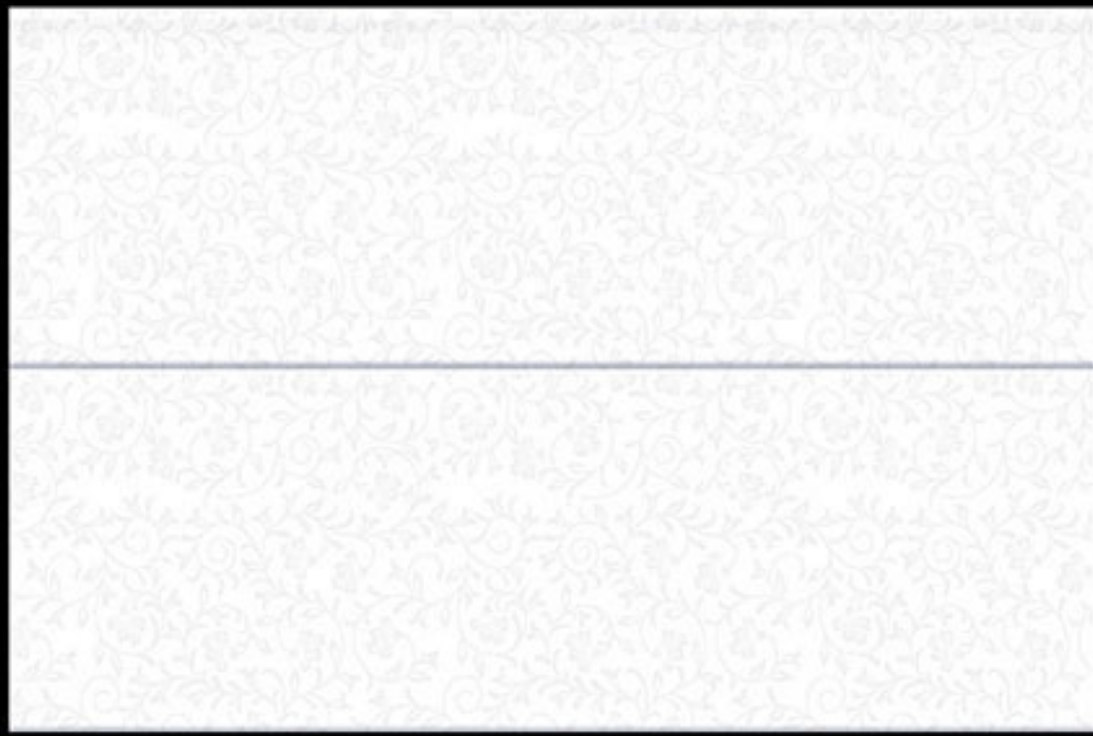
536-HL-1 (Random)



300X450MM

KITCHEN SERIES

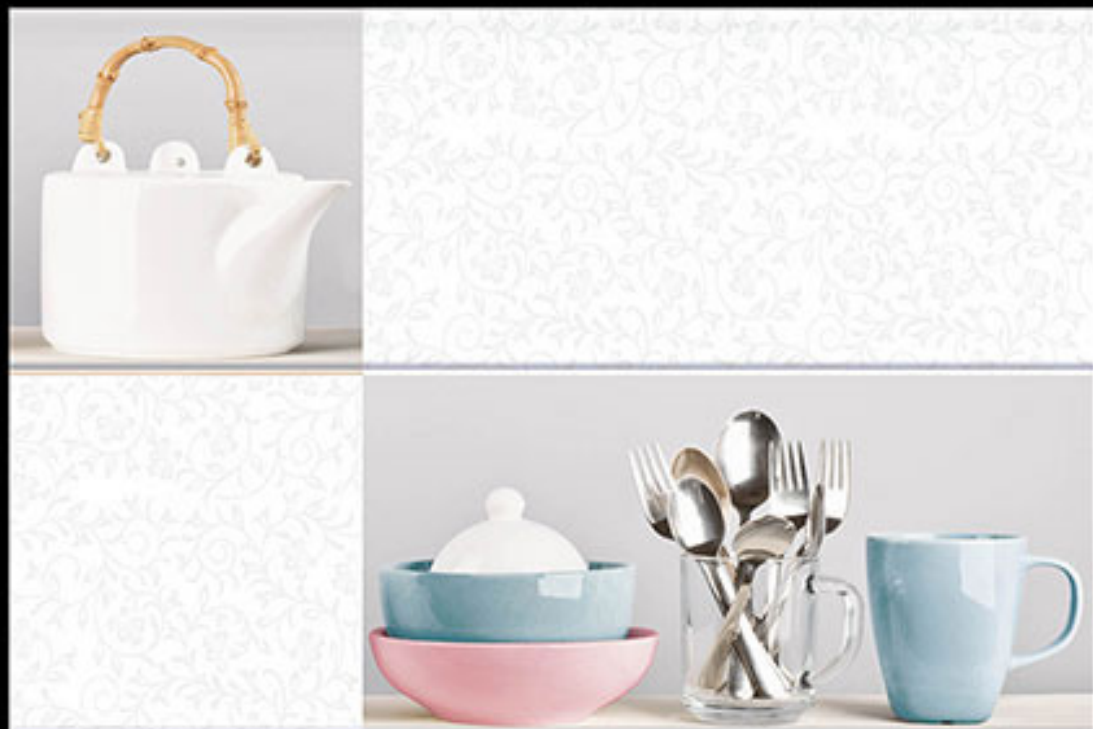
REXTRON[®]
DIGITAL WALL TILES



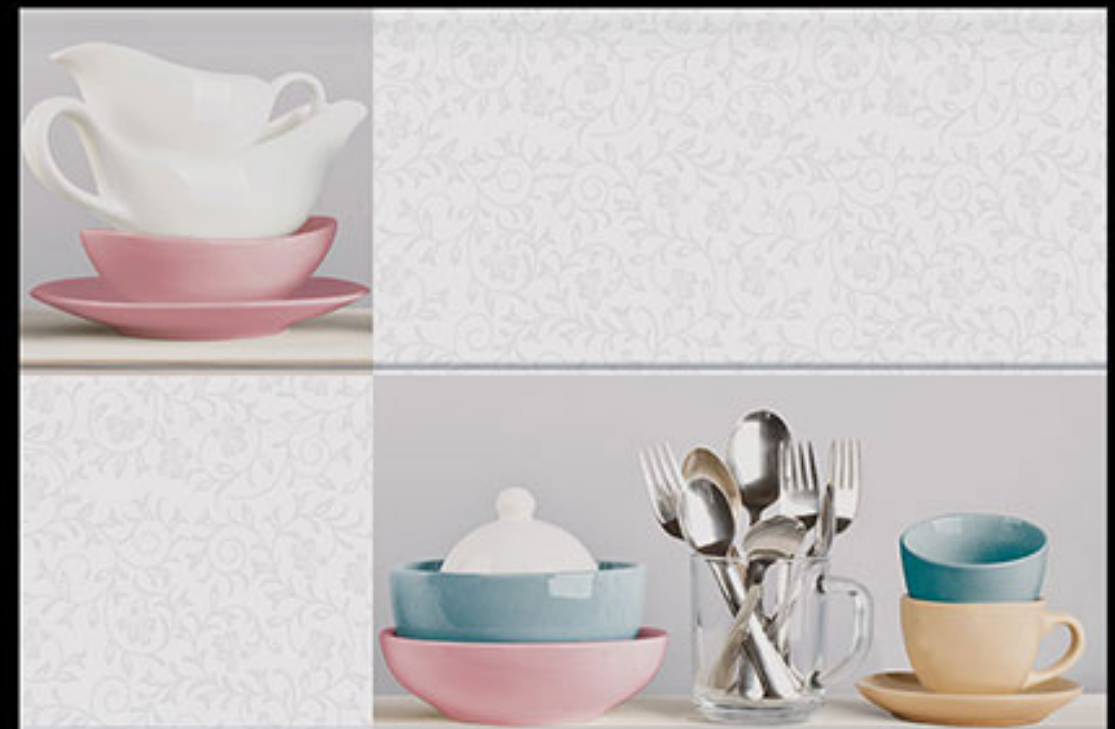
536-LT



536-HL-1 (Random)



536-HL-1 (Random)



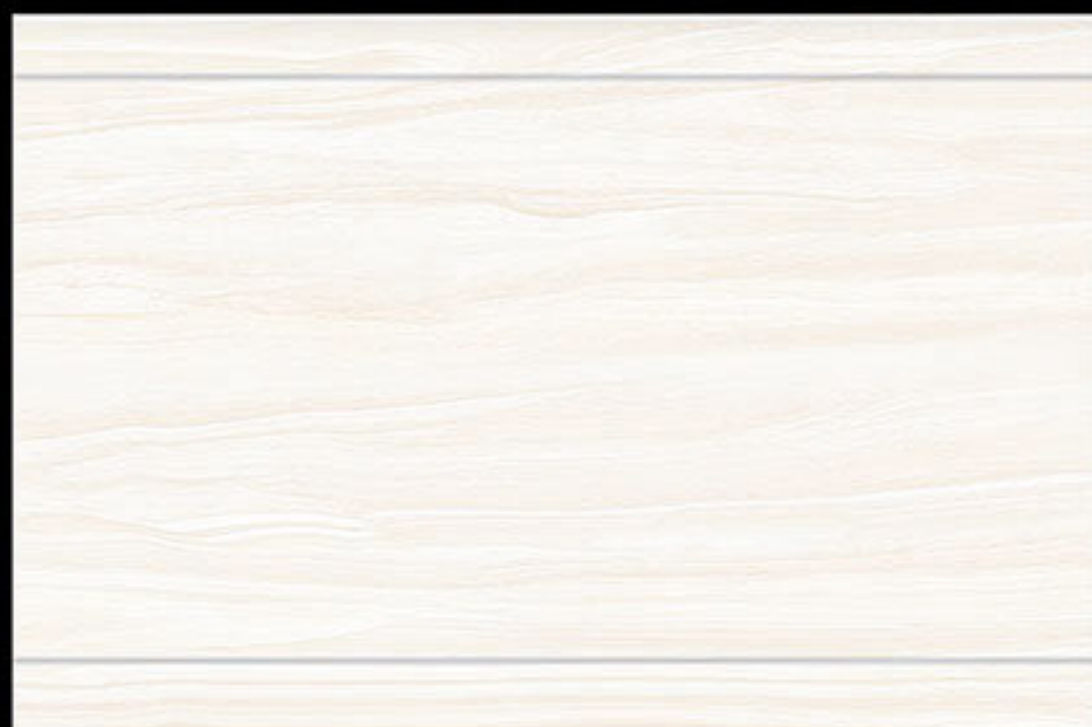
536-HL-1 (Random)



300X450MM

KITCHEN SERIES

REXTRON[®]
DIGITAL WALL TILES



537-LT



537-HL-2



300X450MM

KITCHEN SERIES

REXTRON[®]
DIGITAL WALL TILES



540-LT



540_HL-1 (RANDOM)



540_HL-1 (RANDOM)

NOTE : HL-1 & HL-2 RANDOM PACKING



300X450MM

KITCHEN SERIES

REXTRON[®]
DIGITAL WALL TILES



541-LT



541_HL-1 (RANDOM)



541_HL-1 (RANDOM)

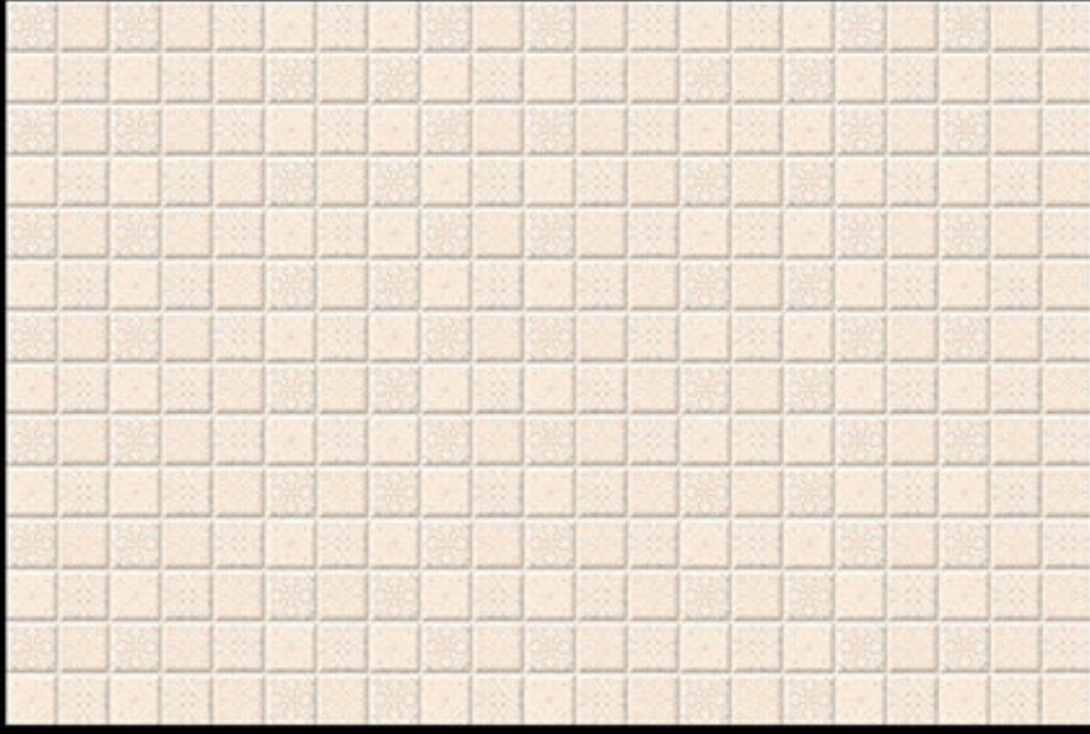
NOTE : HL-1 & HL-2 RANDOM PACKING



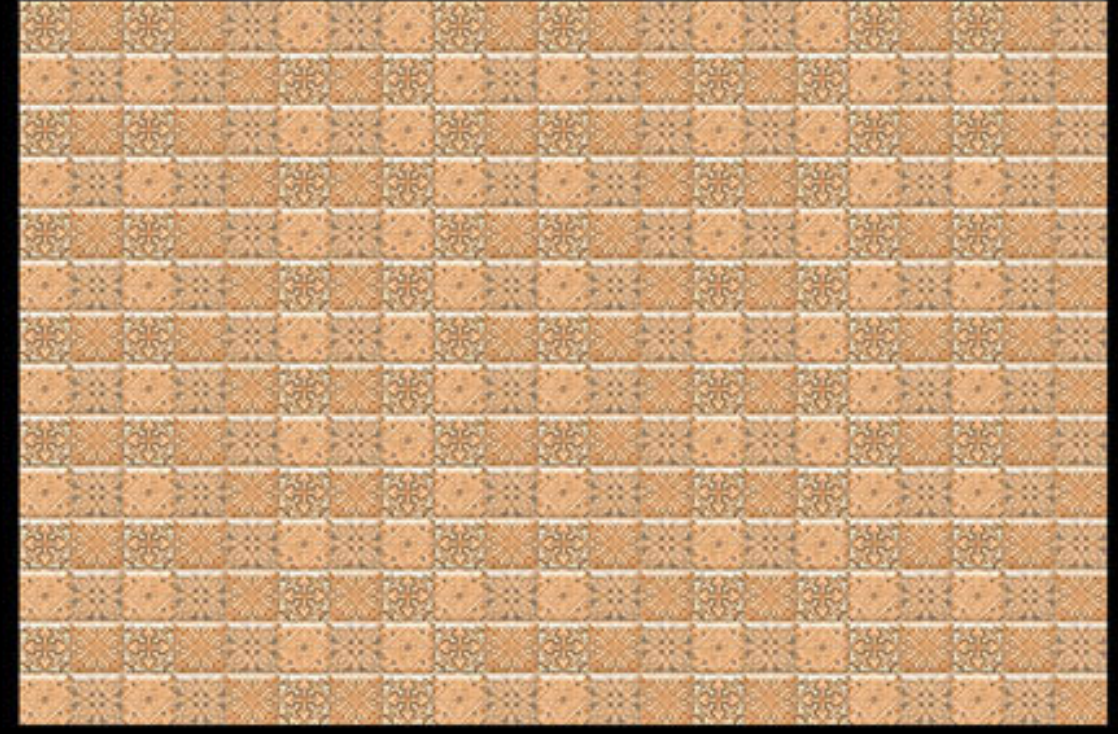
300X450MM

KITCHEN SERIES

REXTRON[®]
DIGITAL WALL TILES



545-LT



545-DK



545_HL-1 (RANDOM)



545_HL-1 (RANDOM)

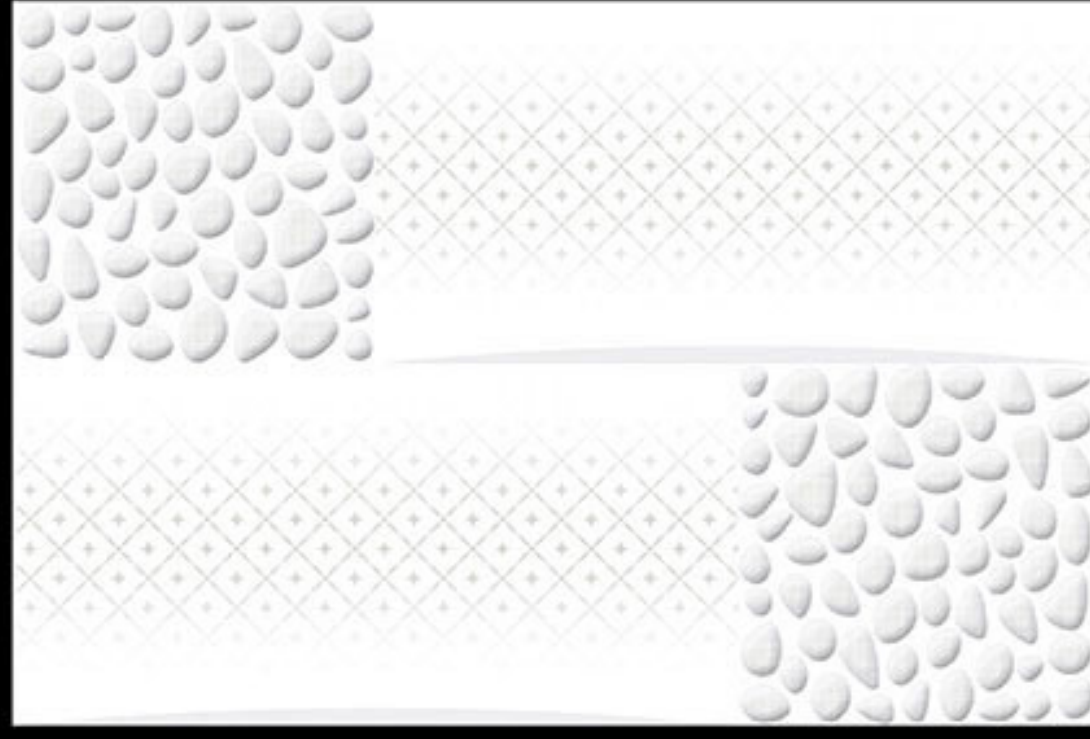
NOTE : HL-1 & HL-2 RANDOM PACKING



300X450MM

KITCHEN SERIES

REXTRON[®]
DIGITAL WALL TILES



548_LT



548_HL-1 (RANDOM)



548_HL-1 (RANDOM)

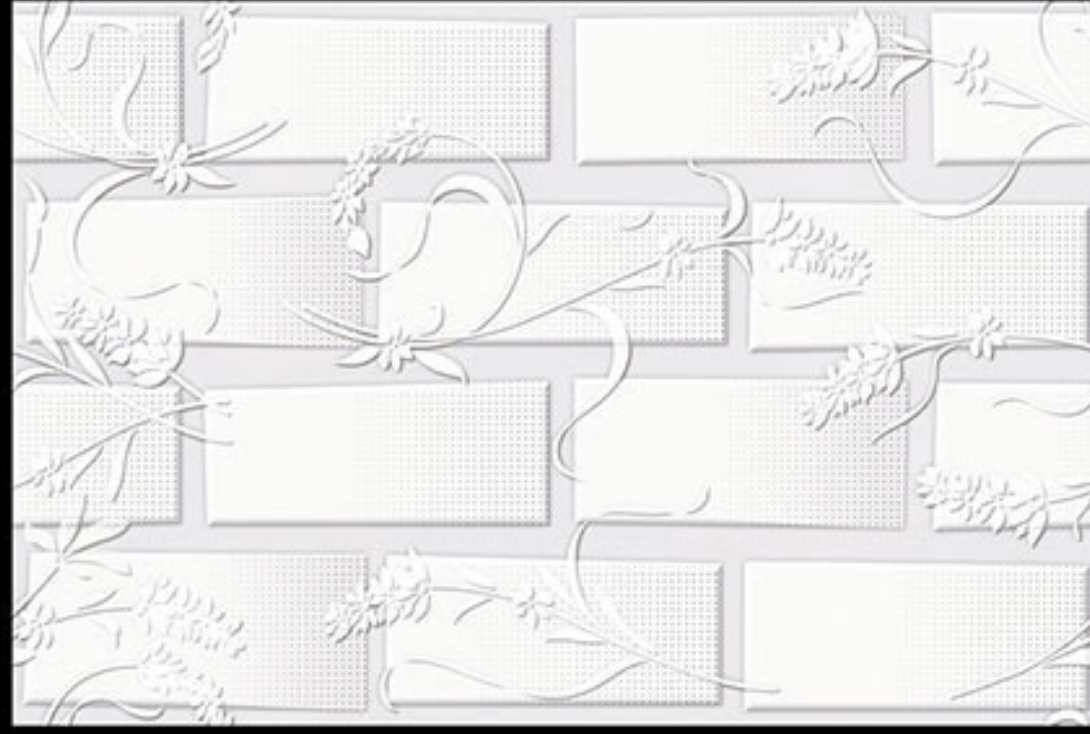
NOTE : HL-1 & HL-2 RANDOM PACKING



300X450MM

KITCHEN SERIES

REXTRON[®]
DIGITAL WALL TILES



549_LT



549_HL-1 (RANDOM)



549_HL-1 (RANDOM)

NOTE : HL-1 & HL-2 RANDOM PACKING



300X450MM

KITCHEN SERIES

REXTRON[®]
DIGITAL WALL TILES



550_HL-4 (BATH)



550_HL-5



550_LT

(RANDOM)



300X450MM

KITCHEN SERIES

REXTRON[®]
DIGITAL WALL TILES



550_HL-6 (RANDOM)



550_HL-6 (RANDOM)



550_LT (RANDOM)

NOTE : HL-6 & HL-7 RANDOM PACKING



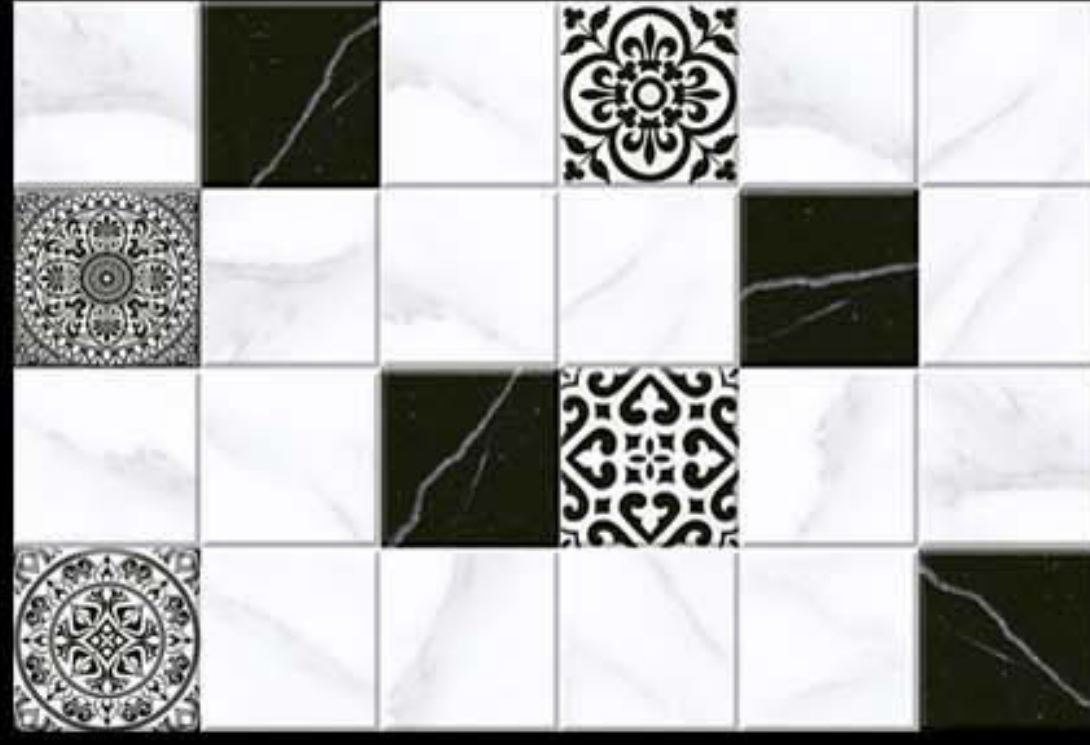
300X450MM

KITCHEN SERIES

REXTRON[®]
DIGITAL WALL TILES



550_LT (RANDOM)



550_HL-7



550_LT (RANDOM)



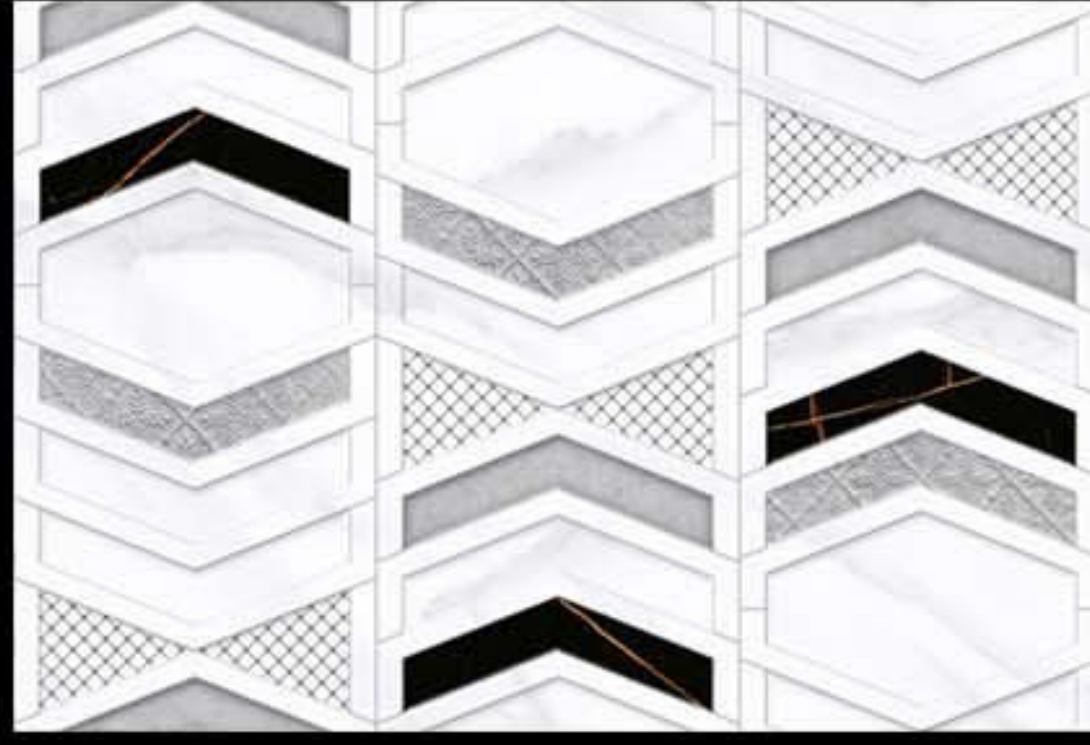
300X450MM

KITCHEN SERIES

REXTRON[®]
DIGITAL WALL TILES



550_LT (RANDOM)



550_HL-8



550_LT (RANDOM)



300X450MM

KITCHEN SERIES

REXTRON[®]
DIGITAL WALL TILES



552_LT



552_HL-1 (RANDOM)



552_HL-1 (RANDOM)



552_HL-1 (RANDOM)

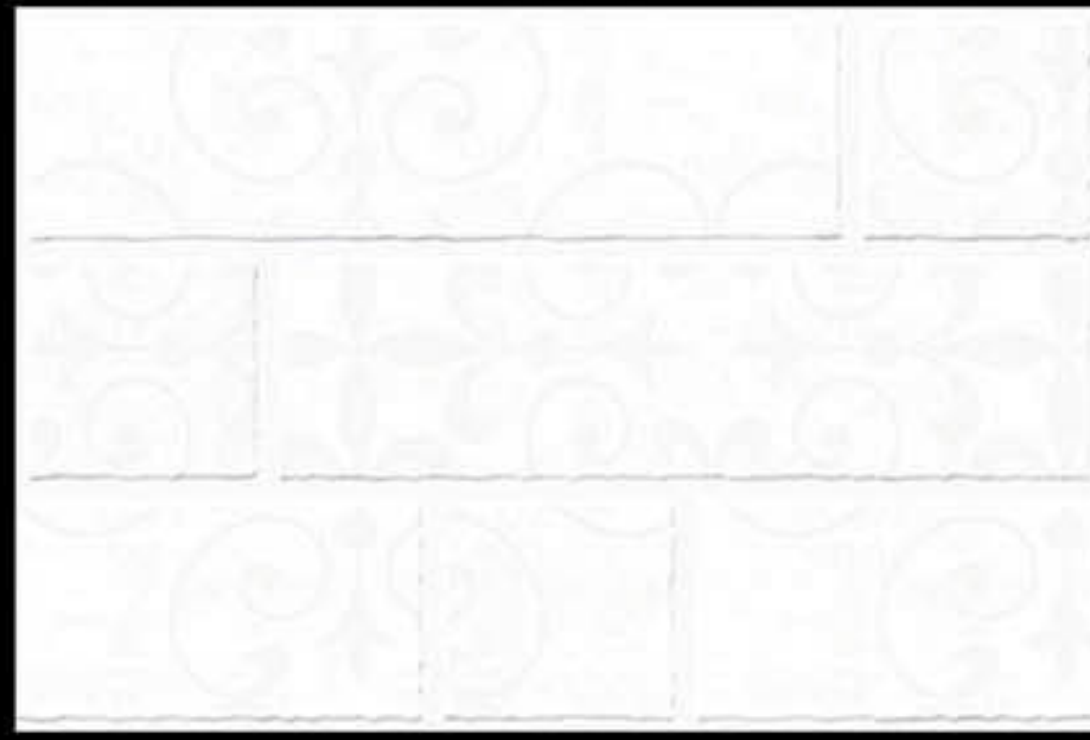
NOTE : HL-1 & HL-2 & HL-3 RANDOM PACKING



300X450MM

KITCHEN SERIES

REXTRON[®]
DIGITAL WALL TILES



553_LT



553_HL-1 (RANDOM)



553_HL-1 (RANDOM)

NOTE : HL-1 & HL-2 RANDOM PACKING



300X450MM

KITCHEN SERIES

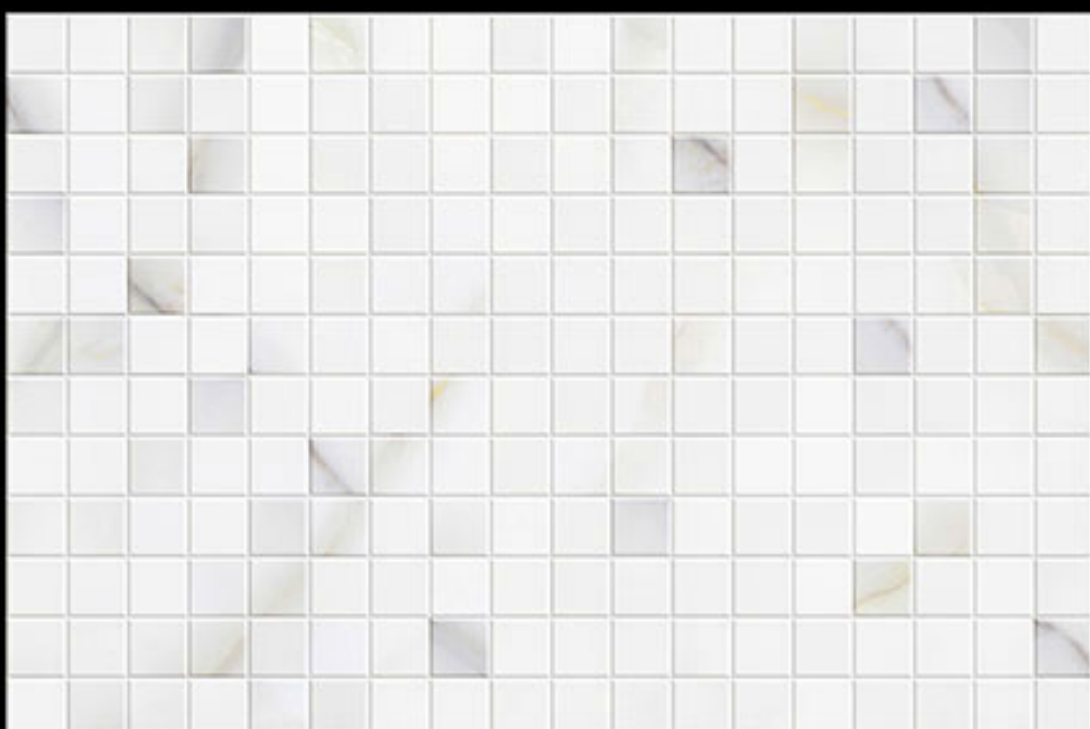
REXTRON[®]
DIGITAL WALL TILES



554_LT_1 RANDOM



554_HL-2 (RANDOM)



554_HL_1



554_HL-2 (RANDOM)

NOTE : HL-2 & HL-3 RANDOM PACKING



Laying Instructions

Before laying of ceramic material, you should take the following aspects into account.

- Check if the ceramic material is suitable for the selected site, according to its specifications and technical characteristics.
- Check whether there is enough material to conclude the work.
- Check the boxes to see confirm in the boxes if the product is the same shade, choice and caliber.

The good performance of the ceramic material depends strongly on the conditions of application for which it is extremely important to ensure the following assumptions.

01

BASE

The base must be stable, free of debris, dust and cracks. curing times and stability of the treatments to which the support may have been subjected should be respected, you should check its flatness and stabilize it, if necessary with the help of products suitable for the purpose.

02

MATERIAL

For a better visual effect of the product, it is advisable to use alternating ceramic pieces taken from various packages simultaneously, if the product has shade variations or has different graphics and shades, it should be applied randomly.

03

JOINTS FOR TILE - LAYING

For a perfect application of the ceramic pieces, you should definitely use joints. They fulfill important aesthetic and technical functions, facilitating alignment of the materials, absorbing any possible deformation liable to be felt in the structure thus preventing the transmission of deformations to the ceramic pieces.

04

PACKAGING WASTE MANAGEMENT

Packaging waste should be placed in locations available for recycle, namely in Eco points or adequate systems.



**At. Jasmatgath, Morbi-Jetpar Road,
B/h, Krypton Ceramic, Near Canal,
Morbi-363 642 (Guj.) INDIA.**



rextronceramics@gmail.com



www.rextronceramics.com